

bs-3128R**[Primary Antibody]****phospho-Ephrin B (Ser300) Rabbit pAb****Bioss**
ANTIBODIES

www.bioss.com.cn

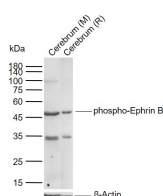
sales@bioss.com.cn

techsupport@bioss.com.cn

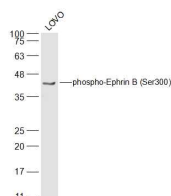
400-901-9800

— DATASHEET —

<p>Host: Rabbit</p> <p>Clonality: Polyclonal</p> <p>GeneID: 1947</p> <p>Target: Ephrin B (Ser300)</p> <p>Immunogen: KLH conjugated Synthesised phosphopeptide derived from human Ephrin B around the phosphorylation site of Ser300: EP(p-S)DI.</p> <p>Purification: affinity purified by Protein A</p> <p>Concentration: 1mg/ml</p> <p>Storage: 0.01M TBS (pH7.4) with 1% BSA, 0.02% Proclin300 and 50% Glycerol. Shipped at 4°C. Store at -20°C for one year. Avoid repeated freeze/thaw cycles.</p> <p>Background: Ephrin B proteins are thought to play key roles in cellular functions as diverse as neuronal migration and blood vessel development. Ephrin B molecules expressed at the membrane surface bind to the Ephrin B family receptors on target cells during cell to cell contact. This interaction leads to cell signaling in the target cell but also generates a reverse signal in the cell expressing Ephrin B on its surface. This reverse signaling event is thought to be critical for vessel maturation and neuronal development. Importantly, tyrosine phosphorylation of Ephrin B is thought to be a critical component of this reverse signaling event. Recent work demonstrated that Tyr331 of Ephrin B was phosphorylated in HEK293 cells after stimulation by the soluble Ephrin B2 receptor tyrosine kinase.</p>	<p>Applications: WB (1:500-2000)</p> <p>Reactivity: Human, Mouse, Rat (predicted: Rabbit, Pig, Cow, Chicken, Dog, Horse)</p> <p>Predicted MW.: 38 kDa</p> <p>Subcellular Location: Cell membrane</p>
--	--

— VALIDATION IMAGES —

Sample: Lane 1: Mouse Cerebrum tissue lysates
Lane 2: Rat Cerebrum tissue lysates
Primary: Anti-phospho-Ephrin B (Ser300) (bs-3128R) at 1/1000 dilution
Secondary: IRDye800CW Goat Anti-Rabbit IgG at 1/20000 dilution
Predicted band size: 38 kDa
Observed band size: 45 kDa



Sample: LOVO(Human) Cell Lysate at 30 ug
Primary: Anti-phospho-Ephrin B (Ser300) (bs-3128R) at 1/500 dilution
Secondary: IRDye800CW Goat Anti-Rabbit IgG at 1/20000 dilution
Predicted band size: 38 kD
Observed band size: 38 kD