

**bs-2116R**

**[ Primary Antibody ]**

## E Tag Rabbit pAb

**Bioss**  
ANTIBODIES

www.bioss.com.cn

sales@bioss.com.cn

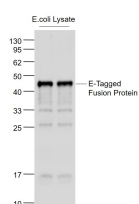
techsupport@bioss.com.cn

400-901-9800

### — DATASHEET —

|   |                     |  |
|---|---------------------|--|
| <b>Host:</b> Rabbit   | <b>Isotype:</b> IgG | <b>Applications:</b> WB (1:1000-5000)  |
| <b>Clonality:</b> Polyclonal  |                     | <b>Reactivity:</b> Species independent |
| <b>Target:</b> E Tag  |                     |  |
| <b>Immunogen:</b> KLH conjugated E Tag peptide: GAPVPYPDPLEPR.  |                     |  |
| <b>Purification:</b> affinity purified by Protein A   |                     |  |
| <b>Concentration:</b> 1mg/ml  |                     |  |
| <b>Storage:</b> 0.01M TBS (pH7.4) with 1% BSA, 0.02% Proclin300 and 50% Glycerol.<br>Shipped at 4°C. Store at -20°C for one year. Avoid repeated freeze/thaw cycles.  |                     |  |
| <b>Background:</b> E Tag is a commonly used epitope tag engineered onto the N- or C-terminus of a protein of interest so that the tagged protein can be analyzed and visualized. Because of the small size of the epitope, it is unlikely to alter the activity of the cloned sequence. |                     |  |

### — VALIDATION IMAGES —



Sample: Lane1: E-Tagged Fusion Protein  
Overexpression E.coli Lysate at 2ug Lane2: E-  
Tagged Fusion Protein Overexpression E.coli  
Lysate at 2ug Primary: Anti- E tag (bs-2116R) at  
1/1000 dilution Secondary: IRDye800CW Goat  
Anti-Rabbit IgG at 1/20000 dilution Predicted  
band size: 45 kD Observed band size: 45 kD