

bs-5736R**[Primary Antibody]****BioSS**
ANTIBODIES

www.bioss.com.cn

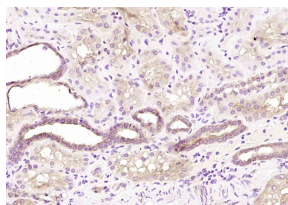
sales@bioss.com.cn

techsupport@bioss.com.cn

400-901-9800

TACC2 Rabbit pAb**— DATASHEET —**

Host: Rabbit	Isotype: IgG	Applications: IHC-P (1:100-500) IHC-F (1:100-500) IF (1:100-500) Reactivity: Human (predicted: Mouse, Rat, Rabbit, Cow, Dog) Predicted MW.: 309 kDa Subcellular Location: Cytoplasm ,Nucleus
Clonality: Polyclonal		
GeneID: 10579	SWISS: Q95359	
Target: TACC2		
Immunogen: KLH conjugated synthetic peptide derived from human TACC2: 2851-2948/2948.		
Purification: affinity purified by Protein A		
Concentration: 1mg/ml		
Storage: 0.01M TBS (pH7.4) with 1% BSA, 0.02% Proclin300 and 50% Glycerol. Shipped at 4°C. Store at -20°C for one year. Avoid repeated freeze/thaw cycles.		
Background: TACC2 is a conserved family of centrosome and microtubule interacting proteins that are implicated in cancer. This gene encodes a protein that concentrates at centrosomes throughout the cell cycle. This gene lies within a chromosomal region associated with tumorigenesis. Expression of this gene is thought to affect the progression of breast tumors. Expression of this gene is also induced by erythropoietin.		

— VALIDATION IMAGES —

Paraformaldehyde-fixed, paraffin embedded (Human kidney); Antigen retrieval by boiling in sodium citrate buffer (pH6.0) for 15min; Block endogenous peroxidase by 3% hydrogen peroxide for 20 minutes; Blocking buffer (normal goat serum) at 37°C for 30min; Antibody incubation with (TACC2) Polyclonal Antibody, Unconjugated (bs-5736R) at 1:200 overnight at 4°C, followed by operating according to SP Kit(Rabbit) (sp-0023) instructions and DAB staining.