

**bs-3124R****[ Primary Antibody ]****Phospho-Cyclin D1 (Thr286) Rabbit pAb****BioSS**  
**ANTIBODIES**

www.bioss.com.cn

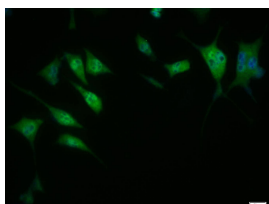
sales@bioss.com.cn

techsupport@bioss.com.cn

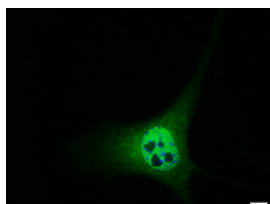
400-901-9800

**— DATASHEET —**

<b>Host:</b> Rabbit <b>Clonality:</b> Polyclonal <b>GeneID:</b> 595 <b>Target:</b> Phospho-Cyclin D1 (Thr286) <b>Immunogen:</b> KLH conjugated Synthesised phosphopeptide derived from human Cyclin D1 around the phosphorylation site of Thr286: AC(p-T)PT. <b>Purification:</b> affinity purified by Protein A <b>Concentration:</b> 1mg/ml <b>Storage:</b> 0.01M TBS (pH7.4) with 1% BSA, 0.02% Proclin300 and 50% Glycerol. Shipped at 4°C. Store at -20°C for one year. Avoid repeated freeze/thaw cycles. <b>Background:</b> The protein encoded by this gene belongs to the highly conserved cyclin family, whose members are characterized by a dramatic periodicity in protein abundance throughout the cell cycle. Cyclins function as regulators of CDK kinases. Different cyclins exhibit distinct expression and degradation patterns which contribute to the temporal coordination of each mitotic event. This cyclin forms a complex with and functions as a regulatory subunit of CDK4 or CDK6, whose activity is required for cell cycle G1/S transition. This protein has been shown to interact with tumor suppressor protein Rb and the expression of this gene is regulated positively by Rb. Mutations, amplification and overexpression of this gene, which alters cell cycle progression, are observed frequently in a variety of tumors and may contribute to tumorigenesis. [provided by RefSeq, Jul 2008].	<b>Isotype:</b> IgG <b>SWISS:</b> P24385	<b>Applications:</b> ICC/IF (1:100) <b>Reactivity:</b> Human (predicted: Mouse, Sheep, Cow, Dog) <b>Predicted MW.:</b> 34 kDa <b>Subcellular Location:</b> Cell membrane ,Cytoplasm ,Nucleus
--	---	---

**— VALIDATION IMAGES —**

Tissue/cell: SH-SY5Y cell; 4% Paraformaldehyde-fixed; Triton X-100 at room temperature for 20 min; Blocking buffer (normal goat serum, C-0005) at 37°C for 20 min; Antibody incubation with (Phospho-Cyclin D1 (Thr286)) polyclonal Antibody, Unconjugated (bs-3124R) 1:100, 90 minutes at 37°C; followed by a FITC conjugated Goat Anti-Rabbit IgG antibody at 37°C for 90 minutes, DAPI (blue, C02-04002) was used to stain the cell nuclei.



Tissue/cell: A431 cell; 4% Paraformaldehyde-fixed; Triton X-100 at room temperature for 20 min; Blocking buffer (normal goat serum, C-0005) at 37°C for 20 min; Antibody incubation with (Phospho-Cyclin D1 (Thr286)) polyclonal Antibody, Unconjugated (bs-3124R) 1:100, 90 minutes at 37°C; followed by a FITC conjugated Goat Anti-Rabbit IgG antibody at 37°C for 90 minutes, DAPI (blue, C02-04002) was used to stain the cell nuclei.