

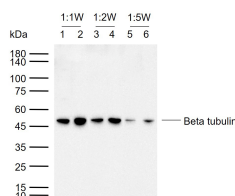
bs-4511R**[Primary Antibody]****Beta tubulin Rabbit pAb, Loading Control****Bioss**
ANTIBODIES

www.bioss.com.cn

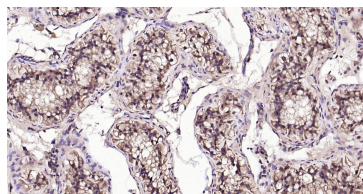
sales@bioss.com.cn

techsupport@bioss.com.cn

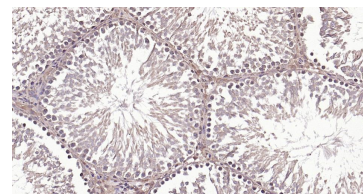
400-901-9800

DATASHEET**Host:** Rabbit**Isotype:** IgG**Clonality:** Polyclonal**GeneID:** 203068**SWISS:** P07437**Target:** Beta tubulin**Immunogen:** KLH conjugated synthetic peptide derived from human tubulin Beta: 61-160/444.**Purification:** affinity purified by Protein A**Concentration:** 1mg/ml**Storage:** 0.01M TBS (pH7.4) with 1% BSA, 0.02% Proclin300 and 50% Glycerol.
Shipped at 4°C. Store at -20°C for one year. Avoid repeated freeze/thaw cycles.**Background:** This gene encodes a beta tubulin protein. This protein forms a dimer with alpha tubulin and acts as a structural component of microtubules. Mutations in this gene cause cortical dysplasia, complex, with other brain malformations 6. Alternative splicing results in multiple splice variants. There are multiple pseudogenes for this gene on chromosomes 1, 6, 7, 8, 9, and 13. [provided by RefSeq, Jun 2014]**Applications:** WB (1:10000-100000)**IHC-P** (1:100-500)**IHC-F** (1:100-500)**IF** (1:100-500)**Flow-Cyt** (1ug/Test)**Reactivity:** Human, Mouse, Rat**Predicted MW.:** 50 kDa**Subcellular Location:** Cytoplasm**VALIDATION IMAGES**

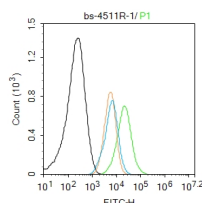
Sample: Lane 1,3,5: Mouse Cerebellum tissue lysates
 Lane 2,4,6: Rat Cerebellum tissue lysates
 Primary: Anti-Beta tubulin (bs-4511R) at 1/10000~1/50000 dilution
 Secondary: HRP conjugated Goat Anti-Rabbit IgG at 1/20000 dilution
 Predicted band size: 50 kDa
 Observed band size: 48 kDa



Paraformaldehyde-fixed, paraffin embedded Human Testis; Antigen retrieval by boiling in sodium citrate buffer (pH6.0) for 15 min;
 Antibody incubation with Beta tubulin Polyclonal Antibody, Unconjugated (bs-4511R) at 1:200 overnight at 4°C, followed by conjugation to the SP Kit (Rabbit, SP-0023) and DAB (C-0010) staining.



Paraformaldehyde-fixed, paraffin embedded Rat Testis; Antigen retrieval by boiling in sodium citrate buffer (pH6.0) for 15 min;
 Antibody incubation with Beta tubulin Polyclonal Antibody, Unconjugated (bs-4511R) at 1:200 overnight at 4°C, followed by conjugation to the SP Kit (Rabbit, SP-0023) and DAB (C-0010) staining.



Blank control: HL-60. Primary Antibody (green line): Rabbit Anti-Beta tubulin antibody (bs-4511R) Dilution: 1μg /10⁶ cells; Isotype Control Antibody (orange line): Rabbit IgG .
 Secondary Antibody : Goat anti-rabbit IgG-AF488
 Dilution: 1μg /test. Protocol The cells were fixed with 4% PFA (10min at room temperature) and then permeabilized with 0.1%PBST for 20 min at room temperature. The cells were then incubated in 5%BSA to block non-specific

Important Note: This product as supplied is intended for research use only, not for use in human, therapeutic or diagnostic applications.

protein-protein interactions for 30 min at room temperature. Cells stained with Primary Antibody for 30 min at room temperature. The secondary antibody used for 40 min at room temperature. Acquisition of 20,000 events was performed.

— SELECTED CITATIONS —

- **[IF=38.104]** Chen, Lei. et al. SARS-CoV-2 nucleocapsid protein triggers hyperinflammation via protein-protein interaction-mediated intracellular Cl[−] accumulation in respiratory epithelium. SIGNAL TRANSDUCT TAR. 2022 Jul;7(1):1-13 IF ;Human. 35896532
- **[IF=19.227]** Xin Zhou. et al. ACSL4 promotes microglia-mediated neuroinflammation by regulating lipid metabolism and VGLL4 expression. BRAIN BEHAV IMMUN. 2023 Mar;109:331 WB ;Mouse. 36791893
- **[IF=17.694]** Wang Kaiyuan. et al. Gas therapy potentiates aggregation-induced emission luminogen-based photoimmunotherapy of poorly immunogenic tumors through cGAS-STING pathway activation. NAT COMMUN. 2023 May;14(1):1-19 WB ;Mouse. 37221157
- **[IF=16.988]** Wu Yutong. et al. Osteoclast-Derived Apoptotic Bodies Inhibit Naive Cd8 T Cell Activation via Siglec15 Promoting Breast Cancer Secondary Metastasis. Cell Reports Medicine. 2022 Nov 03 WB ;Mouse. 37607544
- **[IF=16.744]** Rui Liu. et al. Engineered stem cell biomimetic liposomes carrying levamisole for macrophage immunity reconstruction in leukemia therapy. CHEM ENG J. 2022 Nov;447:137582 WB ;Rat. 10.1016/j.cej.2022.137582