

bs-15124R

[Primary Antibody]

C21orf33 Rabbit pAb

BioSS
ANTIBODIES

www.bioss.com.cn

sales@bioss.com.cn

techsupport@bioss.com.cn

400-901-9800

— DATASHEET —

Host: Rabbit

Isotype: IgG

Clonality: Polyclonal

Target: C21orf33

Immunogen: KLH conjugated synthetic peptide derived from human C21orf33: 101-200/268.

Purification: affinity purified by Protein A

Concentration: 1mg/ml

Storage: 0.01M TBS (pH7.4) with 1% BSA, 0.02% Proclin300 and 50% Glycerol.
Shipped at 4°C. Store at -20°C for one year. Avoid repeated freeze/thaw cycles.

Applications: WB (1:500-2000)

IHC-P (1:100-500)

IHC-F (1:100-500)

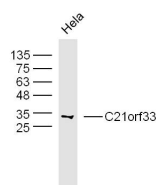
IF (1:100-500)

Flow-Cyt (1µg/Test)

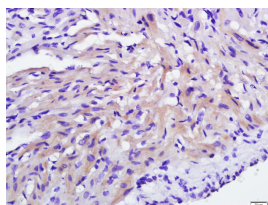
Reactivity: Human, Rat
(predicted: Mouse, Pig, Chicken, Dog)

Predicted MW.: 28 kDa

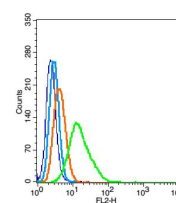
— VALIDATION IMAGES —



Sample: HeLa Cell (Human) Lysate at 40 µg
Primary: Anti-C21orf33 (bs-15124R) at 1/300
dilution Secondary: IRDye800CW Goat Anti-
Rabbit IgG at 1/20000 dilution Predicted band
size: 28 kD Observed band size: 28 kD



Tissue/cell: Rat heart tissue; 4%
Paraformaldehyde-fixed and paraffin-
embedded; Antigen retrieval: citrate buffer (0.01M, pH 6.0), Boiling bathing for 15min; Block endogenous peroxidase by 3% Hydrogen peroxide for 30min; Blocking buffer (normal goat serum, C-0005) at 37°C for 20 min; Incubation: Anti-C21orf33 Polyclonal Antibody, Unconjugated(bs-15124R) 1:500, overnight at 4°C, followed by conjugation to the secondary antibody(SP-0023) and DAB(C-0010) staining



Blank control: heLa(blue), the cells were fixed with 2% paraformaldehyde (10 min) and then permeabilized with ice-cold 90% methanol for 30 min on ice.. Isotype Control Antibody: Rabbit IgG(orange); Secondary Antibody: Goat anti-rabbit IgG-FITC(white blue), Dilution: 1:100 in 1 X PBS containing 0.5% BSA; Primary Antibody Dilution: 1µg in 100 µL 1X PBS containing 0.5% BSA(green).