

bs-1907R**[Primary Antibody]****ATTY Rabbit pAb****BioSS**
ANTIBODIES

www.bioss.com.cn

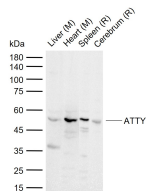
sales@bioss.com.cn

techsupport@bioss.com.cn

400-901-9800

— DATASHEET —

Host: Rabbit	Isotype: IgG	Applications: WB (1:500-2000)
Clonality: Polyclonal		Reactivity: Mouse, Rat (predicted: Human, Cow)
GeneID: 6898	SWISS: P17735	
Target: ATTY		
Immunogen: KLH conjugated synthetic peptide derived from human Tat: 151-250/454.		Predicted MW.: 50 kDa
Purification: affinity purified by Protein A		Subcellular Location: Cytoplasm
Concentration: 1mg/ml		
Storage: 0.01M TBS (pH7.4) with 1% BSA, 0.02% Proclin300 and 50% Glycerol. Shipped at 4°C. Store at -20°C for one year. Avoid repeated freeze/thaw cycles.		
Background: This nuclear gene encodes a mitochondrial protein tyrosine aminotransferase which is present in the liver and catalyzes the conversion of L-tyrosine into p-hydroxyphenylpyruvate. Mutations in this gene cause tyrosinemia (type II, Richner-Hanhart syndrome), a disorder accompanied by major skin and corneal lesions, with possible mental retardation. A regulator gene for tyrosine aminotransferase is X-linked.		

— VALIDATION IMAGES —

Sample: Lane 1: Mouse Liver tissue lysates Lane 2: Mouse Heart tissue lysates Lane 3: Rat Spleen tissue lysates Lane 4: Rat Cerebrum tissue lysates Primary: Anti-ATTY (bs-1907R) at 1/1000 dilution Secondary: IRDye800CW Goat Anti-Rabbit IgG at 1/20000 dilution Predicted band size: 50 kDa Observed band size: 52 kDa