

bsm-2026M**[Primary Antibody]**

www.bioss.com.cn

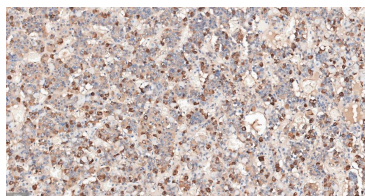
sales@bioss.com.cn

techsupport@bioss.com.cn

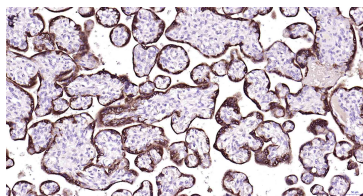
400-901-9800

CGA Mouse mAb**— DATASHEET —**

Host: Mouse	Isotype: IgG	Applications: IHC-P (1:100-500) IHC-F (1:100-500) IF (1:100-500) ELISA (1:5000-10000) Reactivity: Human Predicted MW.: 10 kDa Subcellular Location: Secreted
Clonality: Monoclonal	CloneNo.: 4A8	
GeneID: 1081	SWISS: P01215	
Target: CGA		
Purification: affinity purified by Protein A		
Concentration: 1mg/ml		
Storage: Size : 50ul/100ul/200ul 0.01M PBS (pH7.4) with 0.02% Proclin300. Size : 200ug (PBS only) 0.01M PBS Shipped at 4°C. Store at -20°C for one year. Avoid repeated freeze/thaw cycles.		
Background: The four human glycoprotein hormones chorionic gonadotropin (CG), luteinizing hormone (LH), follicle stimulating hormone (FSH), and thyroid stimulating hormone (TSH) are dimers consisting of alpha and beta subunits that are associated noncovalently. The alpha subunits of these hormones are identical, however, their beta chains are unique and confer biological specificity. The protein encoded by this gene is the alpha subunit and belongs to the glycoprotein hormones alpha chain family. Two transcript variants encoding different isoforms have been found for this gene. [provided by RefSeq, Nov 2011]		

— VALIDATION IMAGES —

Paraformaldehyde-fixed, paraffin embedded Human pituitary gland; Antigen retrieval by boiling in sodium citrate buffer (pH6.0) for 15 min; Antibody incubation with CGA Monoclonal Antibody, Unconjugated(bsm-2026M) at 1:200 overnight at 4°C, followed by conjugation to the SP Kit(Mouse, sp-0024) and DAB (C-0010) staining.



Paraformaldehyde-fixed, paraffin embedded Human Placenta; Antigen retrieval by boiling in sodium citrate buffer (pH6.0) for 15 min; Antibody incubation with CGA Monoclonal Antibody, Unconjugated(bsm-2026M) at 1:200 overnight at 4°C, followed by conjugation to the SP Kit (Mouse, sp-0024) and DAB (C-0010) staining.