

bs-18765R**[Primary Antibody]****MED19/LCMR1 Rabbit pAb****Bioss**
ANTIBODIES

www.bioss.com.cn

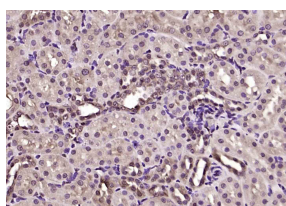
sales@bioss.com.cn

techsupport@bioss.com.cn

400-901-9800

— DATASHEET —

| | | |
|--|----------------------|---|
| Host: Rabbit | Isotype: IgG | Applications: IHC-P (1:100-500) |
| Clonality: Polyclonal | | IHC-F (1:100-500) |
| GeneID: 219541 | SWISS: A0JLT2 | IF (1:100-500) |
| Target: MED19/LCMR1 | | |
| Immunogen: KLH conjugated synthetic peptide derived from human MED19/LCMR1: 51-150/244. | | |
| Purification: affinity purified by Protein A | | Reactivity: Rat (predicted: Human, Mouse, Cow, Chicken, Horse) |
| Concentration: 1mg/ml | | |
| Storage: 0.01M TBS (pH7.4) with 1% BSA, 0.02% Proclin300 and 50% Glycerol. Shipped at 4°C. Store at -20°C for one year. Avoid repeated freeze/thaw cycles. | | Predicted MW.: 26 kDa |
| Background: MED19 is a component of the Mediator complex, which is a coactivator for DNA-binding factors that activate transcription via RNA polymerase II (Sato et al., 2003 [PubMed 12584197]).[supplied by OMIM, Oct 2008] | | Subcellular Location: Nucleus |

— VALIDATION IMAGES —

Paraformaldehyde-fixed, paraffin embedded (rat kidney); Antigen retrieval by boiling in sodium citrate buffer (pH6.0) for 15min; Block endogenous peroxidase by 3% hydrogen peroxide for 20 minutes; Blocking buffer (normal goat serum) at 37°C for 30min; Antibody incubation with (MED19) Polyclonal Antibody, Unconjugated (bs-18765R) at 1:200 overnight at 4°C, followed by operating according to SP Kit(Rabbit) (sp-0023) instructions and DAB staining.

— SELECTED CITATIONS —

- **[IF=3.269]** Kai Wang. et al. Lung cancer metastasis-related protein 1 promotes the transferring from advanced metastatic prostate cancer to castration-resistant prostate cancer by activating the glucocorticoid receptor α signal pathway. Bioengineered. 2022;13(3):5373-5385 IHC,WB ;Human. 35184651