
phospho-MDM2 (Ser188 + Ser186) Rabbit pAb

Catalog Number: bs-18747R

Target Protein: phospho-MDM2 (Ser188 + Ser186)

Concentration: 1mg/ml

Form: Liquid

Host: Rabbit

Clonality: Polyclonal

Isotype: IgG

Applications: Flow-Cyt (1ug/Test)

Reactivity: Human

Predicted MW: 55 kDa

Subcellular: Cytoplasm, Nucleus

Locations:

Entrez Gene: 4193

Swiss Prot: Q00987

Source: KLH conjugated synthesised phosphopeptide derived from human MDM2 around the phosphorylation site of Ser188 + Ser186: HK(p-S)D(p-S)IS.

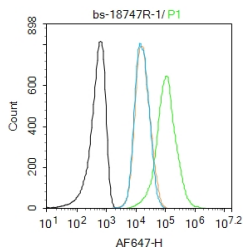
Purification: affinity purified by Protein A

Storage: 0.01M TBS (pH7.4) with 1% BSA, 0.02% Proclin300 and 50% Glycerol.

Shipped at 4°C. Store at -20°C for one year. Avoid repeated freeze/thaw cycles.

Background: Inhibits TP53/p53- and TP73/p73-mediated cell cycle arrest and apoptosis by binding its transcriptional activation domain. Functions as a ubiquitin ligase E3, in the presence of E1 and E2, toward p53 and itself. Permits the nuclear export of p53 and targets it for proteasome-mediated proteolysis. Binds p53, p73, ARF(P14), ribosomal protein L5 and specifically to RNA. Can interact also with retinoblastoma protein(RB), E1A-associated protein EP300 and the E2F1 transcription factor. Forms a ternary complex with TP53/p53 and WWOX. Interacts with CDKN2AIP, MTBP, TRBG1 and USP7. Isoform Mdm2-F does not interact with TP53/p53. Interacts with PYHIN1. Interacts with, and ubiquitinates HIV-1 Tat. Belongs to the MDM2/MDM4 family.

VALIDATION IMAGES



Blank control:Molt4. Primary Antibody (green line): Rabbit Anti-phospho-MDM2 (Ser188 + Ser186) antibody (bs-18747R) Dilution: 1µg /10⁶ cells; Isotype Control Antibody (orange line): Rabbit IgG . Secondary Antibody : Goat anti-rabbit IgG-AF647 Dilution: 1µg /test. Protocol The cells were fixed with 4% PFA (10min at room temperature)and then permeabilized with 90% ice-cold methanol for 20 min at -20°C. The cells were then incubated in 5%BSA to block non-specific protein-protein interactions for 30 min at room temperature .Cells stained with Primary Antibody for 30 min at room temperature. The secondary antibody used for 40 min at room temperature. Acquisition of 20,000 events was performed.