

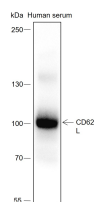
**bsm-60575R****[ Primary Antibody ]****BioSS**  
**ANTIBODIES**

www.bioss.com.cn

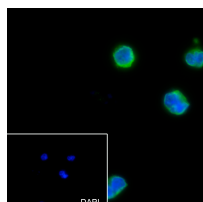
sales@bioss.com.cn

techsupport@bioss.com.cn

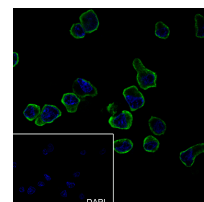
400-901-9800

**CD62L Recombinant Rabbit mAb****— DATASHEET —****Host:** Rabbit**Clonality:** Recombinant**Target:** CD62L**Purification:** affinity purified by Protein A**Concentration:** 1mg/ml**Storage:** 0.01M TBS (pH7.4) with 1% BSA, 0.02% Proclin300 and 50% Glycerol.  
Shipped at 4°C. Store at -20°C for one year. Avoid repeated freeze/thaw cycles.**Background:** This gene encodes a cell surface adhesion molecule that belongs to a family of adhesion/homing receptors. The encoded protein contains a C-type lectin-like domain, a calcium-binding epidermal growth factor-like domain, and two short complement-like repeats. The gene product is required for binding and subsequent rolling of leucocytes on endothelial cells, facilitating their migration into secondary lymphoid organs and inflammation sites. Single-nucleotide polymorphisms in this gene have been associated with various diseases including immunoglobulin A nephropathy. Alternatively spliced transcript variants have been found for this gene. [provided by RefSeq, Oct 2009].**Isotype:** IgG**CloneNo.:** G3B6**Applications:** WB (1:500-1:1000)**Flow-Cyt** (1:50)**ICC/IF** (1:50)**Reactivity:** Human**Subcellular Location:** Cell membrane**— VALIDATION IMAGES —**

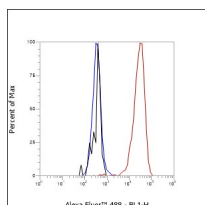
Blocking buffer: 5% NFDM/TBST Primary Ab dilution: 1:1000 Primary Ab incubation condition: 2 hours at room temperature  
Secondary Ab: Goat Anti-Rabbit IgG H&L (HRP)  
Lysate: Human serum Protein loading quantity: 20 µg Exposure time: 30 s Predicted MW: 42 kDa  
Observed MW: 100 kDa



Cell line: Raji Fixative: 4% Paraformaldehyde  
Permeabilization: 0.1% TritonX-100 Primary ab dilution: 1:50 Primary incubation condition: 4°C overnight  
Secondary ab: Goat Anti-Rabbit IgG  
Nuclear counter stain: DAPI (Blue) Comment: Color green is the positive signal for bsm-60575R



Cell line: EL4 Fixation: 4% Paraformaldehyde  
Permeabilization: 0.1% TritonX-100 Primary Ab dilution: 1:50 Primary Ab incubation condition: 4°C overnight  
Secondary Ab: Goat Anti-Rabbit IgG Nuclear counter stain: DAPI (Blue) Comment: Color green is the positive signal for bsm-60575R



Cell line: PBMC Fixative: 4% Paraformaldehyde  
Permeabilization: 0.1% TritonX-100 Primary ab dilution: 1:50 Secondary ab: Goat anti Rabbit IgG  
Unlabelled control: The cell without incubation with primary antibody and secondary antibody (Black line). Isotype control: Rabbit monoclonal IgG (Blue line). Comment: Line red is the positive signal for bsm-60575R

Important Note: This product as supplied is intended for research use only, not for use in human, therapeutic or diagnostic applications.