

bs-15548R**[Primary Antibody]****IFI16 Rabbit pAb****BioSS**
ANTIBODIES

www.bioss.com.cn

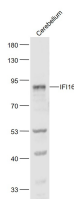
sales@bioss.com.cn

techsupport@bioss.com.cn

400-901-9800

— DATASHEET —

Host: Rabbit	Isotype: IgG	Applications: WB (1:500-2000)
Clonality: Polyclonal		Reactivity: Mouse (predicted: Human)
GeneID: 3428	SWISS: Q16666	
Target: IFI16		
Immunogen: KLH conjugated synthetic peptide derived from human IFI16: 701-785/785.		Predicted MW.: 88 kDa
Purification: affinity purified by Protein A		Subcellular Location: Cytoplasm ,Nucleus
Concentration: 1mg/ml		
Storage: 0.01M TBS (pH7.4) with 1% BSA, 0.02% Proclin300 and 50% Glycerol. Shipped at 4°C. Store at -20°C for one year. Avoid repeated freeze/thaw cycles.		
Background: Interferon (IFN) Inducible 16 (IFI16) protein belongs to a family of HIN 200 human and mouse proteins. IFI16 is a nuclear protein containing regulatory domains such as DNA binding domain, transcriptional regulatory domain and DAPIN/PAAD domain. IFI16 has three isoforms A, B, and C (85-95 kDa), which arise as a result of mRNA alternative splicing. All are phosphorylated on serine and threonine residues and can homo and heterodimerize. Expression is restricted to the nuclei of hematopoietic cells, fibroblasts and epithelial cells. IFI16 expression in hematopoietic cells of myeloid lineage is tightly regulated and highly induced in the differentiation and proliferation of the cell. Due to its localization in the nucleus, regulation of protein expression, and ability to bind DNA, it is assumed that IFI16 has a role in transcription regulation of cell differentiation. In addition, it was found that IFI16 can act as a transcriptional repressor and is involved in regulation and activation of p53 in cancer cells.		

— VALIDATION IMAGES —

Sample: Cerebellum (Mouse) Lysate at 40 ug
Primary: Anti- IFI16 (bs-15548R) at 1/1000
dilution Secondary: IRDye800CW Goat Anti-
Rabbit IgG at 1/20000 dilution Predicted band
size: 88 kD Observed band size: 88 kD