

TMEM106B Recombinant Mouse mAb

Catalog Number: bsm-60357M

Target Protein: TMEM106B

Concentration: 1mg/ml

Form: Liquid

Host: Mouse

Clonality: Recombinant

Clone No.: A6B12

Isotype: IgG2a/Kappa

Applications: WB (1:200-1:1000), IHC-P (1:100-500), IHC-F (1:100-500), IF

Reactivity: Human

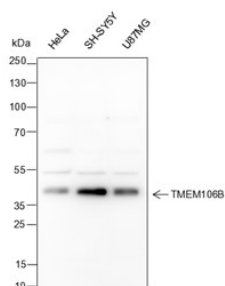
Purification: affinity purified by Protein G

Storage: 0.01M TBS (pH7.4) with 1% BSA, 0.02% Proclin300 and 50% Glycerol.

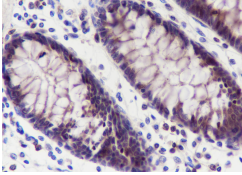
Shipped at 4°C. Store at -20°C for one year. Avoid repeated freeze/thaw cycles.

Background: TMEM106B is a 274 amino acid single-pass membrane protein that is encoded by a gene which maps to human chromosome 7. Chromosome 7 houses over 1,000 genes and comprises nearly 5% of the human genome. Defects in some of the genes localized to chromosome 7 have been linked to Osteogenesis imperfecta, Pendred syndrome, Lissencephaly, Citrullinemia and Shwachman-Diamond syndrome. The deletion of a portion of the q arm of chromosome 7 is associated with Williams-Beuren syndrome, a condition characterized by mild mental retardation, an unusual comfort and friendliness with strangers and an elfin appearance. Deletions of portions of the q arm of chromosome 7 are also seen in a number of myeloid disorders, including cases of acute myelogenous leukemia and myelodysplasia.

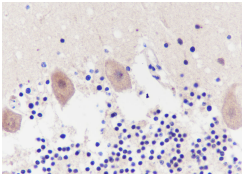
VALIDATION IMAGES



Blocking buffer: 5% NFDM/TBST Primary ab dilution: 1:1000 Primary ab incubation condition: 4°C, overnight
Lysate: HeLa, SH-SY5Y, U87MG Protein loading quantity: 20 µg Exposure time: 60 s Predicted MW: 40 kDa
Observed MW: 40 kDa



Tissue: Human colon Section type: Formalin fixed & Paraffin -embedded section Retrieval method: High temperature and high pressure Retrieval buffer: Tris/EDTA buffer, pH 9.0 Primary ab dilution: 1:100 Primary ab incubation condition: 1 hour at room temperature Counter stain: Hematoxylin Comment: Color brown is the positive signal for bsm-60357M



Tissue: Human cerebellum Section type: Formalin fixed & Paraffin -embedded section Retrieval method: High temperature and high pressure Retrieval buffer: Tris/EDTA buffer, pH 9.0 Primary ab dilution: 1:100 Primary ab incubation condition: 1 hour at room temperature Counter stain: Hematoxylin Comment: Color brown is the positive signal for bsm-60357M