

bs-2749R**[Primary Antibody]****Bioss**
ANTIBODIES

www.bioss.com.cn

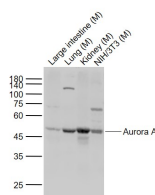
sales@bioss.com.cn

techsupport@bioss.com.cn

400-901-9800

Aurora A Rabbit pAb**— DATASHEET —**

<p>Host: Rabbit</p> <p>Clonality: Polyclonal</p> <p>GeneID: 6790</p> <p>Target: Aurora A</p> <p>Immunogen: KLH conjugated synthetic peptide derived from human Aurora A: 21-120/344.</p> <p>Purification: affinity purified by Protein A</p> <p>Concentration: 1mg/ml</p> <p>Storage: 0.01M TBS (pH7.4) with 1% BSA, 0.02% Proclin300 and 50% Glycerol. Shipped at 4°C. Store at -20°C for one year. Avoid repeated freeze/thaw cycles.</p> <p>Background: Aurora A plays a role in cell cycle regulation during anaphase and/or telophase, in relation to the function of the centrosome/spindle pole region during chromosome segregation. Aurora A plays a key role during tumor development and progression and is overexpressed in many human cancers including breast, ovarian and colorectal. Aurora A is viewed as a potential target for anticancer drug treatment.</p> <p>Aurora B is a mitotic protein kinase that phosphorylates histone H3 (probably on Serine 10), behaves as a chromosomal passenger protein, and may regulate several stages of mitosis such as centrosome separation, chromosome segregation and cytokinesis. It localizes to the inner centromere region from prophase to anaphase.</p> <p>The Aurora kinases, members of the Ser/Thr protein kinase family, associate with microtubules during chromosome movement and segregation. Aurora kinase C may play a part in organizing microtubules in relation to the function of the centrosome/spindle pole during mitosis. This protein is localized to centrosome from anaphase to cytokinesis. Expression is limited to testis in normal cells. Elevated expression levels are seen only in a subset of cancer cells such as HepG2, HuH7 and HeLa cells. Aurora-C expression is maximum at M phase.</p>	<p>Isotype: IgG</p> <p>SWISS: O14965</p> <p>Applications: WB (1:500-2000)</p> <p>Reactivity: Mouse</p> <p>Predicted MW.: 48 kDa</p> <p>Subcellular Location: Cytoplasm ,Nucleus</p>
--	---

— VALIDATION IMAGES —

Sample: Lane 1: Large intestine (Mouse) Lysate at 40 ug
 Lane 2: Lung (Mouse) Lysate at 40 ug
 Lane 3: Kidney (Mouse) Lysate at 40 ug
 Lane 4: NIH/3T3 (Mouse) Cell Lysate at 30 ug
 Primary: Anti-Aurora A (bs-2749R) at 1/1000 dilution
 Secondary: IRDye800CW Goat Anti-Rabbit IgG at 1/20000 dilution
 Predicted band size: 48 kD
 Observed band size: 48 kD

Important Note: This product as supplied is intended for research use only, not for use in human, therapeutic or diagnostic applications.

— SELECTED CITATIONS —

- **[IF=4.3]** Qinbing Xue. et al. Lycorine (Lycoris radiata)—a unique natural medicine on breast cancer. J CELL MOL MED. 2024 Aug;28(16):e70032 WB ;Human. 39175104
- **[IF=2.65]** Ruoyang Lin. et al. Inhibitory Effects of Rabdosia rubescens in Esophageal Squamous Cell Carcinoma: Network Pharmacology and Experimental Validation. EVID-BASED COMPL ALT. 2022 Nov 10;2022:2696347 WB ;Human. 36408344