

bs-3051R**[Primary Antibody]****phospho-BAP1 (Ser592) Rabbit pAb****Bioss**
ANTIBODIES

www.bioss.com.cn

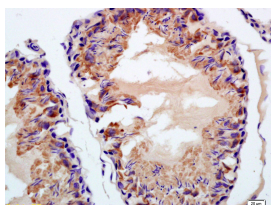
sales@bioss.com.cn

techsupport@bioss.com.cn

400-901-9800

DATASHEET

Host: Rabbit	Isotype: IgG	Applications: IHC-P (1:100-500)
Clonality: Polyclonal		IHC-F (1:100-500)
GeneID: 8314	SWISS: Q92560	IF (1:100-500)
Target: BAP1 (Ser592)		Reactivity: Rat (predicted: Human, Rabbit, Dog)
Immunogen: KLH conjugated Synthesised phosphopeptide derived from human BAP1 around the phosphorylation site of Ser592: QG(p-S)QG.		
Purification: affinity purified by Protein A		Predicted MW.: 81 kDa
Concentration: 1mg/ml		Subcellular Location: Cytoplasm ,Nucleus
Storage: 0.01M TBS (pH7.4) with 1% BSA, 0.02% Proclin300 and 50% Glycerol. Shipped at 4°C. Store at -20°C for one year. Avoid repeated freeze/thaw cycles.		
Background: This gene encodes a nuclear phosphoprotein that plays a role in maintaining genomic stability and acts as a tumor suppressor. The encoded protein combines with other tumor suppressors, DNA damage sensors, and signal transducers to form a large multi-subunit protein complex known as BASC for BRCA1-associated genome surveillance complex. This gene product associates with RNA polymerase II, and through the C-terminal domain, also interacts with histone deacetylase complex. This protein thus plays a role in transcription, DNA repair of double-stranded breaks, and recombination. Mutations in this gene are responsible for approximately 40% of inherited breast cancers and more than 80% of inherited breast and ovarian cancers. Alternative splicing plays a role in modulating the subcellular localization and physiological function of this gene. Many alternatively spliced transcript variants have been described for this gene but only some have had their full-length natures identified. Transcript Variant: This variant (BRCA1a') uses different splice site in the 5' UTR when compared to variant BRCA1a. It encodes the full-length BRCA1 protein (isoform 1) which is also known as p220. Variants BRCA1a and BRCA1b also encode the full-length BRCA1 protein. Publication Note: This RefSeq record includes a subset of the publications that are available for this gene. Please see the Entrez Gene record to access additional publications.		

VALIDATION IMAGES

Tissue/cell: rat testis tissue; 4%
Paraformaldehyde-fixed and paraffin-
embedded; Antigen retrieval: citrate buffer (
0.01M, pH 6.0), Boiling bathing for 15min; Block
endogenous peroxidase by 3% Hydrogen
peroxide for 30min; Blocking buffer (normal goat
serum,C-0005) at 37°C for 20 min; Incubation:
Anti-Phospho-BAP1(Ser592) Polyclonal
Antibody, Unconjugated(bs-3051R) 1:200,
overnight at 4°C, followed by conjugation to the
secondary antibody(SP-0023) and DAB(C-0010)
staining

Important Note: This product as supplied is intended for research use only, not for use in human, therapeutic or diagnostic applications.