

bs-23954R**[Primary Antibody]****CRMP5 Rabbit pAb****BioSS**
ANTIBODIES

www.bioss.com.cn

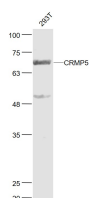
sales@bioss.com.cn

techsupport@bioss.com.cn

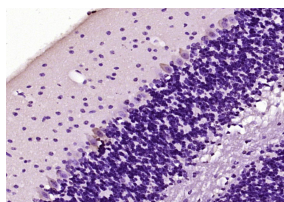
400-901-9800

— DATASHEET —

Host: Rabbit Clonality: Polyclonal GeneID: 56896 Target: CRMP5 Immunogen: KLH conjugated synthetic peptide derived from human CRMP5 : 301-400/564. Purification: affinity purified by Protein A Concentration: 1mg/ml Storage: 0.01M TBS (pH7.4) with 1% BSA, 0.02% Proclin300 and 50% Glycerol. Shipped at 4°C. Store at -20°C for one year. Avoid repeated freeze/thaw cycles. Background: The collapsin response mediator protein (CRMP) family of proteins (also referred to as ULIP6) are a group of neurologic proteins that have been found to play key roles in growth cone guidance during neural development. CRMP5 has relatively low sequence homology with the other four members of the CRMP family. CRMP5 is expressed in the developing nervous system in an expression pattern that resembles CRMP2 and has a peak expression during the first postnatal week. Elevated levels of autoantibody to CRMP5 have been shown to be linked paraneoplastic autoimmune optic neuritis and other paraneoplastic neoplasms. Auto-immunity against CRMP5 expression (predominantly the N-terminal epitopes) is also being investigated as an oncological marker in the respiratory system and in the thymus.	Isotype: IgG SWISS: Q9BPU6	Applications: WB (1:500-2000) IHC-P (1:100-500) IHC-F (1:100-500) IF (1:100-500) Reactivity: Human, Mouse (predicted: Rat, Rabbit, Pig, Sheep, Cow, Dog, Horse) Predicted MW.: 65 kDa Subcellular Location: Cytoplasm
--	---	--

— VALIDATION IMAGES —

Sample: 293T(Human) Cell Lysate at 30 ug
Primary: Anti- CRMP5 (bs-23954R) at 1/1000
dilution Secondary: IRDye800CW Goat Anti-
Rabbit IgG at 1/20000 dilution Predicted band
size: 65 kD Observed band size: 69 kD



Paraformaldehyde-fixed, paraffin embedded
(mouse cerebellum tissue); Antigen retrieval by
boiling in sodium citrate buffer (pH6.0) for
15min; Block endogenous peroxidase by 3%
hydrogen peroxide for 20 minutes; Blocking
buffer (normal goat serum) at 37°C for 30min;
Antibody incubation with (CRMP5) Polyclonal
Antibody, Unconjugated (bs-23954R) at 1:200
overnight at 4°C, followed by operating
according to SP Kit(Rabbit) (sp-0023)
instructions and DAB staining.