

bs-10468R**[Primary Antibody]****Sema3A Rabbit pAb****BioSS**
ANTIBODIES

www.bioss.com.cn

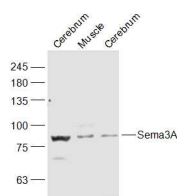
sales@bioss.com.cn

techsupport@bioss.com.cn

400-901-9800

— DATASHEET —

Host: Rabbit	Isotype: IgG	Applications: WB (1:500-2000)
Clonality: Polyclonal		Reactivity: Mouse, Rat (predicted: Human, Rabbit, Pig, Sheep, Chicken, Dog, Horse)
GeneID: 10371	SWISS: Q14563	Predicted MW.: 86 kDa
Target: Sema3A		Subcellular Location: Secreted
Immunogen: KLH conjugated synthetic peptide derived from human Sema3A: 111-210/772.		
Purification: affinity purified by Protein A		
Concentration: 1mg/ml		
Storage: 0.01M TBS (pH7.4) with 1% BSA, 0.02% Proclin300 and 50% Glycerol. Shipped at 4°C. Store at -20°C for one year. Avoid repeated freeze/thaw cycles.		
Background: This gene is a member of the semaphorin family and encodes a protein with an Ig-like C2-type (immunoglobulin-like) domain, a PSI domain and a Sema domain. This secreted protein can function as either a chemorepulsive agent, inhibiting axonal outgrowth, or as a chemoattractive agent, stimulating the growth of apical dendrites. In both cases, the protein is vital for normal neuronal pattern development. Increased expression of this protein is associated with schizophrenia and is seen in a variety of human tumor cell lines. Also, aberrant release of this protein is associated with the progression of Alzheimer's disease.		

— VALIDATION IMAGES —

Sample: Cerebrum (Mouse) Lysate at 40 ug
Muscle (Mouse) Lysate at 40 ug Cerebrum (Rat)
Lysate at 40 ug Primary: Anti-Sema3A
(bs-10468R) at 1/1000 dilution Secondary:
IRDye800CW Goat Anti-Rabbit IgG at 1/20000
dilution Predicted band size: 86 kD Observed
band size: 86 kD