

bs-7600R**[Primary Antibody]****IKIP Rabbit pAb****BioSS**
ANTIBODIES

www.bioss.com.cn

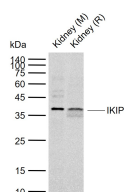
sales@bioss.com.cn

techsupport@bioss.com.cn

400-901-9800

— DATASHEET —

Host: Rabbit	Isotype: IgG	Applications: WB (1:500-2000)
Clonality: Polyclonal		Reactivity: Mouse, Rat (predicted: Human, Sheep, Cow, Horse)
GeneID: 121457		Predicted MW.: 39 kDa
Target: IKIP		Subcellular Location: Cell membrane ,Cytoplasm
Immunogen: KLH conjugated synthetic peptide derived from human IKIP: 250-350/350.		
Purification: affinity purified by Protein A		
Concentration: 1mg/ml		
Storage: 0.01M TBS (pH7.4) with 1% BSA, 0.02% Proclin300 and 50% Glycerol. Shipped at 4°C. Store at -20°C for one year. Avoid repeated freeze/thaw cycles.		
Background: IKIP (I kappa B kinase interacting protein) is located on chromosome 12 in close proximity to APAF1 (apoptotic protease- activating factor-1). IKIP was originally cloned from a yeast two hybrid screening as an IKK2 interacting protein. IKIP and APAF1 share a common 488 bp promoter from which the two genes are transcribed in opposite directions, presumably in a co-regulated manner. Three IKIP transcripts are generated by differential splicing and alternative exon usage and show no significant homology to other genes. IKIP is expressed predominantly in the lung, kidney, spleen, thymus and skeletal muscle. Like APAF1, expression of IKIP is enhanced by irradiation, in a p53-dependent manner. When transfected into endothelial cells IKIP promotes apoptosis suggesting that it plays a role in the cell death process as well as NF-κB regulation.		

— VALIDATION IMAGES —

Sample: Lane 1: Mouse Kidney tissue lysates
Lane 2: Rat Kidney tissue lysates Primary: Anti-
IKIP (bs-7600R) at 1/1000 dilution Secondary:
IRDye800CW Goat Anti-Rabbit IgG at 1/20000
dilution Predicted band size: 39 kDa Observed
band size: 38 kDa