

bs-1904R**[Primary Antibody]****Bioss**
ANTIBODIES

www.bioss.com.cn

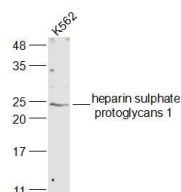
sales@bioss.com.cn

techsupport@bioss.com.cn

400-901-9800

Syndecan 2 Rabbit pAb**— DATASHEET —**

Host: Rabbit Clonality: Polyclonal GeneID: 6383 Target: Syndecan 2 Immunogen: KLH conjugated synthetic peptide derived from human Syndecan-2: 101-201/201. < Cytoplasmic > Purification: affinity purified by Protein A Concentration: 1mg/ml Storage: 0.01M TBS (pH7.4) with 1% BSA, 0.02% Proclin300 and 50% Glycerol. Shipped at 4°C. Store at -20°C for one year. Avoid repeated freeze/thaw cycles. Background: The protein encoded by this gene is a transmembrane (type I) heparan sulfate proteoglycan and is a member of the syndecan proteoglycan family. The syndecans mediate cell binding, cell signaling, and cytoskeletal organization and syndecan receptors are required for internalization of the HIV-1 tat protein. The syndecan-2 protein functions as an integral membrane protein and participates in cell proliferation, cell migration and cell-matrix interactions via its receptor for extracellular matrix proteins. Altered syndecan-2 expression has been detected in several different tumor types. [provided by RefSeq].	Isotype: IgG SWISS: P34741 Applications: WB (1:500-2000) Reactivity: Human, Mouse, Rat, Cow (predicted: Pig, Chicken, Dog, Horse) Predicted MW.: 20 kDa Subcellular Location: Cell membrane ,Cytoplasm
--	---

— VALIDATION IMAGES —

Sample: K562(Human) Cell Lysate at 30 ug
Primary: Anti-heparin sulphate proteoglycans 1 (bs-1904R) at 1/1000 dilution Secondary: IRDye800CW Goat Anti-Rabbit IgG at 1/20000 dilution Predicted band size: 20 kD Observed band size: 24 kD

— SELECTED CITATIONS —

- **[IF=4.8]** Yan Du. et al. Targeting SDCBP2 in acute myeloid leukemia. CELL SIGNAL. 2023 Sep;;110889 IHC ;Mouse. 37714445
- **[IF=2.97]** Hambruch, N., et al. "Bovine placental heparanase and syndecan expression is related to placental maturation." Placenta. IHC ;="Bovine". 28864018