

bs-3412R**[Primary Antibody]****phospho-SHC1 (Tyr427) Rabbit pAb****Bioss**
ANTIBODIES

www.bioss.com.cn

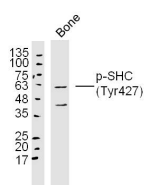
sales@bioss.com.cn

techsupport@bioss.com.cn

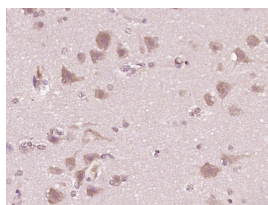
400-901-9800

— DATASHEET —

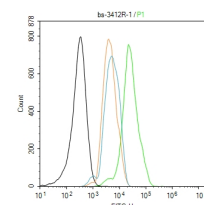
Host: Rabbit	Isotype: IgG	Applications: WB (1:500-2000) IHC-P (1:100-500) IHC-F (1:100-500) IF (1:100-500) Flow-Cyt (1ug/Test)
Clonality: Polyclonal		Reactivity: Human, Mouse (predicted: Rat)
GeneID: 6464	SWISS: P29353	
Target: phospho-SHC1 (Tyr427)		
Immunogen: KLH conjugated Synthesised phosphopeptide derived from human SHC around the phosphorylation site of Tyr427: PS(p-Y)VN.		
Purification: affinity purified by Protein A		
Concentration: 1mg/ml		
Storage: 0.01M TBS (pH7.4) with 1% BSA, 0.02% Proclin300 and 50% Glycerol. Shipped at 4°C. Store at -20°C for one year. Avoid repeated freeze/thaw cycles.		Predicted MW.: 63 kDa
Background: This gene encodes three main isoforms that differ in activities and subcellular location. While all three are adapter proteins in signal transduction pathways, the longest (p66Shc) may be involved in regulating life span and the effects of reactive oxygen species. The other two isoforms, p52Shc and p46Shc, link activated receptor tyrosine kinases to the Ras pathway by recruitment of the GRB2/SOS complex. p66Shc is not involved in Ras activation. Unlike the other two isoforms, p46Shc is targeted to the mitochondrial matrix. Several transcript variants encoding different isoforms have been found for this gene. [provided by RefSeq, Feb 2011]		Subcellular Location: Cytoplasm

— VALIDATION IMAGES —

Sample: Bone (Mouse) Lysate at 30 ug Primary:
Anti- p-SHC(Tyr427) (bs-3412) at 1/300 dilution
Secondary: IRDye800CW Goat Anti-Rabbit IgG at
1/10000 dilution Predicted band size: 63 kD
Observed band size: 63 kD



Paraformaldehyde-fixed, paraffin embedded
(human brain glioma); Antigen retrieval by
boiling in sodium citrate buffer (pH6.0) for
15min; Block endogenous peroxidase by 3%
hydrogen peroxide for 20 minutes; Blocking
buffer (normal goat serum) at 37°C for 30min;
Antibody incubation with (SHC (Tyr427))
Polyclonal Antibody, Unconjugated (bs-3412R)
at 1:400 overnight at 4°C, followed by operating
according to SP Kit(Rabbit) (sp-0023)
instructions and DAB staining.



Blank control (black line) :SH-SY5Y. Primary
Antibody (green line): Rabbit Anti-phospho-
SHC1 (Tyr427) antibody (bs-3412R)
Dilution:1ug/Test; Secondary Antibody (white
blue line) : Goat anti-rabbit IgG-FITC Dilution:
0.5ug/Test. Isotype control (orange line) :
Normal Rabbit IgG Protocol The cells were fixed
with 4% PFA (10min at room temperature) and
then permeabilized with 90% ice-cold methanol
for 20 min at -20°C. The cells were then
incubated in 5%BSA to block non-specific
protein-protein interactions for 30 min at room
temperature .Cells stained with Primary
Antibody for 30 min at room temperature. The
secondary antibody used for 40 min at room
temperature. Acquisition of 20,000 events was
performed.

— SELECTED CITATIONS —

- **[IF=4.8]** Ningning Wang. et al. SHP-1 alleviates acute liver injury caused by Escherichia coli sepsis through negatively

Important Note: This product as supplied is intended for research use only, not for use in human, therapeutic or diagnostic applications.

regulating the canonical and non-canonical NFκB signaling pathways. INT IMMUNOPHARMACOL. 2024 Dec;143:113371
WB,IHC ;Mouse. 39413645