

bs-3411R**[Primary Antibody]****phospho-SHC1 (Tyr349) Rabbit pAb****BioSS**
ANTIBODIES

www.bioss.com.cn

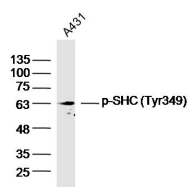
sales@bioss.com.cn

techsupport@bioss.com.cn

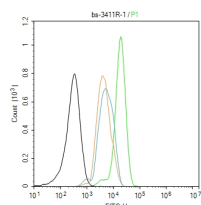
400-901-9800

— DATASHEET —

Host: Rabbit	Isotype: IgG	Applications: WB (1:500-2000) Flow-Cyt (1ug/Test)
Clonality: Polyclonal		Reactivity: Human (predicted: Mouse, Rat)
GeneID: 6464	SWISS: P29353	
Target: SHC1 (Tyr349)		Predicted MW.: 63 kDa
Immunogen: KLH conjugated Synthesised phosphopeptide derived from human SHC around the phosphorylation site of Tyr349: HQ(p-Y)YN.		Subcellular Location: Cytoplasm
Purification: affinity purified by Protein A		
Concentration: 1mg/ml		
Storage: 0.01M TBS (pH7.4) with 1% BSA, 0.02% Proclin300 and 50% Glycerol. Shipped at 4°C. Store at -20°C for one year. Avoid repeated freeze/thaw cycles.		
Background: This gene encodes three main isoforms that differ in activities and subcellular location. While all three are adapter proteins in signal transduction pathways, the longest (p66Shc) may be involved in regulating life span and the effects of reactive oxygen species. The other two isoforms, p52Shc and p46Shc, link activated receptor tyrosine kinases to the Ras pathway by recruitment of the GRB2/SOS complex. p66Shc is not involved in Ras activation. Unlike the other two isoforms, p46Shc is targeted to the mitochondrial matrix. Several transcript variants encoding different isoforms have been found for this gene. [provided by RefSeq, Feb 2011]		

— VALIDATION IMAGES —

Sample: A431 Cell (Human) Lysate at 30 ug
 Primary: Anti- p-SHC (Tyr349) (bs-3411R) at 1/300
 dilution Secondary: IRDye800CW Goat Anti-
 Rabbit IgG at 1/20000 dilution Predicted band
 size: 63kD Observed band size: 63kD



Blank control (black line) :SH-SY5Y. Primary
 Antibody (green line): Rabbit Anti-phospho-
 SHC1 (Tyr349) antibody (bs-3411R)
 Dilution:1ug/Test; Secondary Antibody (white
 blue line) : Goat anti-rabbit IgG-FITC Dilution:
 0.5ug/Test. Isotype control (orange line) :
 Normal Rabbit IgG Protocol The cells were fixed
 with 4% PFA (10min at room temperature)and
 then permeabilized with 90% ice-cold methanol
 for 20 min at -20°C, The cells were then
 incubated in 5%BSA to block non-specific
 protein-protein interactions for 30 min at room
 temperature .Cells stained with Primary
 Antibody for 30 min at room temperature. The
 secondary antibody used for 40 min at room
 temperature. Acquisition of 20,000 events was
 performed.