

bs-16628R**[Primary Antibody]****Importin 13 Rabbit pAb****Bioss**
ANTIBODIES

www.bioss.com.cn

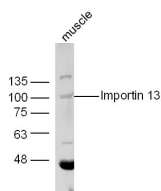
sales@bioss.com.cn

techsupport@bioss.com.cn

400-901-9800

— DATASHEET —

Host: Rabbit	Isotype: IgG	Applications: WB (1:500-2000)
Clonality: Polyclonal		
GeneID: 9670	SWISS: Q94829	
Target: Importin 13		
Immunogen: KLH conjugated synthetic peptide derived from human Importin 13: 51-150/963.		
Purification: affinity purified by Protein A		Reactivity: Mouse (predicted: Human, Rat, Pig, Sheep, Cow, Dog, Horse)
Concentration: 1mg/ml		Predicted MW.: 108 kDa
Storage: 0.01M TBS (pH7.4) with 1% BSA, 0.02% Proclin300 and 50% Glycerol. Shipped at 4°C. Store at -20°C for one year. Avoid repeated freeze/thaw cycles.		Subcellular Location: Cytoplasm ,Nucleus
Background: This gene encodes a member of the importin-beta family of nuclear transport proteins. The encoded protein mediates the import of specific cargo proteins from the cytoplasm to the nucleus and is dependent on the Ras-related nuclear protein-GTPase system. The encoded protein is also involved in nuclear export of the eukaryotic translation initiation factor 1A.[provided by RefSeq, Mar 2009]		

— VALIDATION IMAGES —

Sample: Muscle (Mouse) Lysate at 40 ug Primary:
Anti-Importin 13 (bs-16628R) at 1/300 dilution
Secondary: IRDye800CW Goat Anti-Rabbit IgG at
1/20000 dilution Predicted band size: 108 kD
Observed band size: 100 kD