

bs-18987R

[Primary Antibody]

N4BP3 Rabbit pAb

BioSS
ANTIBODIES

www.bioss.com.cn

sales@bioss.com.cn

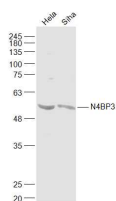
techsupport@bioss.com.cn

400-901-9800

— DATASHEET —

Host: Rabbit	Isotype: IgG	Applications: WB (1:500-2000)
Clonality: Polyclonal		Reactivity: Human (predicted: Mouse, Rat, Sheep, Cow, Chicken, Dog, Horse)
GeneID: 23138	SWISS: O15049	Predicted MW.: 60 kDa
Target: N4BP3		Subcellular Location: Cytoplasm
Immunogen: KLH conjugated synthetic peptide derived from human N4BP3: 51-150/544.		
Purification: affinity purified by Protein A		
Concentration: 1mg/ml		
Storage: 0.01M TBS (pH7.4) with 1% BSA, 0.02% Proclin300 and 50% Glycerol. Shipped at 4°C. Store at -20°C for one year. Avoid repeated freeze/thaw cycles.		

— VALIDATION IMAGES —



Sample: Hela(Human) Cell Lysate at 30 ug
Siha(Human) Cell Lysate at 30 ug Primary: Anti-N4BP3 (bs-18987R) at 1/1000 dilution
Secondary: IRDye800CW Goat Anti-Rabbit IgG at 1/20000 dilution Predicted band size: 60 kD
Observed band size: 57 kD