

bs-10420R**[Primary Antibody]****Nemo-like kinase Rabbit pAb****Bioss**
ANTIBODIES

www.bioss.com.cn

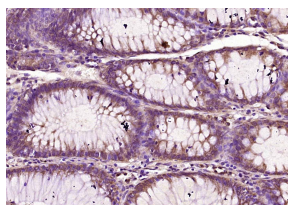
sales@bioss.com.cn

techsupport@bioss.com.cn

400-901-9800

— DATASHEET —

Host: Rabbit Clonality: Polyclonal GeneID: 51701 Target: Nemo-like kinase Immunogen: KLH conjugated synthetic peptide derived from human Nemo-like kinase: 101-200/527. Purification: affinity purified by Protein A Concentration: 1mg/ml Storage: 0.01M TBS (pH7.4) with 1% BSA, 0.02% Proclin300 and 50% Glycerol. Shipped at 4°C. Store at -20°C for one year. Avoid repeated freeze/thaw cycles. Background: Nemo-like kinase (NLK) plays a role in cell fate determination and is required for differentiation of bone marrow stromal cells. It acts downstream of MAP3K7 and HIPK2 to negatively regulate the canonical Wnt/beta-catenin signaling pathway and the phosphorylation and destruction of the MYB transcription factor. It may suppress a wide range of transcription factors by phosphorylation of the coactivator, CREBBP. (referenced from swissprot)	Isotype: IgG SWISS: Q9UBE8	Applications: IHC-P (1:100-500) IHC-F (1:100-500) IF (1:100-500) Reactivity: Human (predicted: Mouse, Rat, Rabbit, Sheep, Cow, Chicken) Predicted MW.: 58 kDa Subcellular Location: Secreted ,Cytoplasm
---	---	--

— VALIDATION IMAGES —

Paraformaldehyde-fixed, paraffin embedded (human colon carcinoma); Antigen retrieval by boiling in sodium citrate buffer (pH6.0) for 15min; Block endogenous peroxidase by 3% hydrogen peroxide for 20 minutes; Blocking buffer (normal goat serum) at 37°C for 30min; Antibody incubation with (Nemo-like kinase) Polyclonal Antibody, Unconjugated (bs-10420R) at 1:200 overnight at 4°C, followed by operating according to SP Kit(Rabbit) (sp-0023) instructions and DAB staining.

— SELECTED CITATIONS —

- **[IF=3.7]** Sara Fernández. et al. BET inhibitors induce NF-κB and E2F downregulation in Hodgkin and Reed–Sternberg cells. EXP CELL RES. 2023 Sep;430:113718 IHC ;Human. 37468057