

bsm-2022M**[Primary Antibody]****Bioss**
ANTIBODIES

www.bioss.com.cn

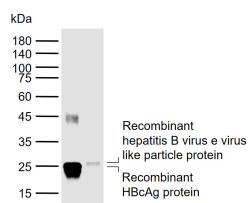
sales@bioss.com.cn

techsupport@bioss.com.cn

400-901-9800

HBeAg Mouse mAb**— DATASHEET —**

Host: Mouse Clonality: Monoclonal Target: HBeAg Purification: affinity purified by Protein G Concentration: 1mg/ml Storage: Size : 50ul/100ul/200ul 0.01M PBS (pH7.4) with 0.02% Proclin300. Size : 200ug (PBS only) 0.01M PBS Shipped at 4°C. Store at -20°C for one year. Avoid repeated freeze/thaw cycles. Background:	Isotype: IgG CloneNo.: 2E9	Applications: WB (1:500-2000) Reactivity: HBV Predicted MW.: 18 kDa Subcellular Location: Cell membrane ,Cytoplasm
-----------------------------------------------------------------------------------------------------------------------------------------------------------------------------------------------------------------------------------------------------------------------------------------------------------------------------------------------------------------------------------------------------------	---------------------------------------------	-------------------------------------------------------------------------------------------------------------------------------------------------------------

— VALIDATION IMAGES —

Sample: Lane 1: Recombinant HBcAg protein,
Tag free Lane 2: Recombinant hepatitis B virus e
virus like particle protein, His Primary: Anti-
HBeAg (bsm-2022M) at 1/1000 dilution
Secondary: IRDye800CW Goat Anti-Mouse IgG at
1/20000 dilution Predicted band size: 18 kDa
Observed band size: 25 kDa

— SELECTED CITATIONS —

- **[IF=4.996]** Garg, Garima. et al. Presence of entry receptors and viral markers suggest a low level of placental replication of hepatitis B virus in a proportion of pregnant women infected with chronic hepatitis B. SCI REP-UK. 2022 Oct;12(1):1-11 IHC ;Human. 36272995