

bs-0987R**[Primary Antibody]****Butyrylcholinesterase Rabbit pAb****BioSS**
ANTIBODIES

www.bioss.com.cn

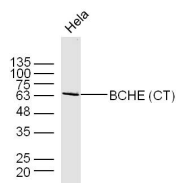
sales@bioss.com.cn

techsupport@bioss.com.cn

400-901-9800

— DATASHEET —

Host: Rabbit	Isotype: IgG	Applications: WB (1:500-2000)
Clonality: Polyclonal		
GeneID: 590	SWISS: P06276	
Target: Butyrylcholinesterase		
Immunogen: KLH conjugated synthetic peptide derived from human BCHE: 505-602/602.		
Purification: affinity purified by Protein A		
Concentration: 1mg/ml		
Storage: 0.01M TBS (pH7.4) with 1% BSA, 0.02% Proclin300 and 50% Glycerol. Shipped at 4°C. Store at -20°C for one year. Avoid repeated freeze/thaw cycles.		Reactivity: Human (predicted: Mouse, Rat, Rabbit, Pig, Chicken, Dog, Horse)
Background: Mutant alleles at the BCHE locus are responsible for suxamethonium sensitivity. Homozygous persons sustain prolonged apnea after administration of the muscle relaxant suxamethonium in connection with surgical anesthesia. The activity of pseudocholinesterase in the serum is low and its substrate behavior is atypical. In the absence of the relaxant, the homozygote is at no known disadvantage. [provided by RefSeq, Jul 2008].		Predicted MW.: 66 kDa
		Subcellular Location: Secreted

— VALIDATION IMAGES —

Sample: HeLa Cell Lysate at 30 ug Primary: Anti-BCHE(CT) (bs-0987R) at 1/300 dilution
Secondary: IRDye800CW Goat Anti-Rabbit IgG at 1/10000 dilution Predicted band size: 66 kD
Observed band size: 63 kD