
SIDT2 Rabbit pAb

Catalog Number: bs-17485R

Target Protein: SIDT2

Concentration: 1mg/ml

Form: Liquid

Host: Rabbit

Clonality: Polyclonal

Isotype: IgG

Applications: WB (1:500-2000)

Reactivity: Human (predicted: Mouse, Rat, Rabbit, Pig, Sheep, Cow, Zebrafish, Dog, Horse)

Predicted MW: 93 kDa

Entrez Gene: 51092

Swiss Prot: Q8NBJ9

Source: KLH conjugated synthetic peptide derived from human SIDT2: 201-300/832.

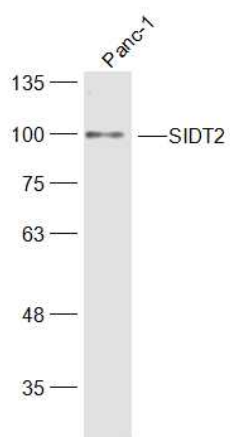
Purification: affinity purified by Protein A

Storage: 0.01M TBS (pH7.4) with 1% BSA, 0.02% Proclin300 and 50% Glycerol.

Shipped at 4°C. Store at -20°C for one year. Avoid repeated freeze/thaw cycles.

Background: SID-1 and SID-2 belong to the systemic RNA interference defective-1 (SID1) family of transmembrane proteins. SID-1, originally identified in *C. elegans*, is an 827 amino acid long protein. It localizes to the cell membrane and contains eleven transmembrane domains. This suggests that SID-1 possibly functions as a channel protein. The overexpression of SID-1 enhances double stranded RNA (dsRNA) uptake in pancreatic ductal adenocarcinoma cells. SID-2, also first identified in *C. elegans*, is an 832 amino acid long protein with multiple transmembrane domains. At least two isoforms exist for SID-2 due to alternative splicing. Isoform 2 contains an additional 21 amino acids after residue 387 and has an alternate sequence that is 8 amino acids shorter for residues 814 to 832 of isoform 1.

VALIDATION IMAGES



Sample: Panc-1(Human) Cell Lysate at 30 ug Primary: Anti- SIDT2 (bs-17485R) at 1/300 dilution Secondary: IRDye800CW Goat Anti-Rabbit IgG at 1/20000 dilution Predicted band size: 93 kD Observed band size: 98 kD