

bs-11887R**[Primary Antibody]****MPP5 Rabbit pAb****Bioss**
ANTIBODIES

www.bioss.com.cn

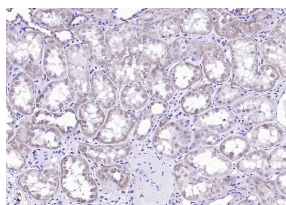
sales@bioss.com.cn

techsupport@bioss.com.cn

400-901-9800

— DATASHEET —

Host: Rabbit	Isotype: IgG	Applications: IHC-P (1:100-500) IHC-F (1:100-500) IF (1:100-500) Reactivity: Human (predicted: Mouse, Rat, Rabbit, Pig, Sheep, Cow, Chicken, Dog, Horse) Predicted MW.: 77 kDa Subcellular Location: Cell membrane ,Cytoplasm
Clonality: Polyclonal		
GeneID: 64398	SWISS: Q8N3R9	
Target: MPP5		
Immunogen: KLH conjugated synthetic peptide derived from human MPP5: 201-300/675.		
Purification: affinity purified by Protein A		
Concentration: 1mg/ml		
Storage: 0.01M TBS (pH7.4) with 1% BSA, 0.02% Proclin300 and 50% Glycerol. Shipped at 4°C. Store at -20°C for one year. Avoid repeated freeze/thaw cycles.		
Background: Two highly conserved complexes are responsible for the assembly of tight junctions, the Crumbs-Pals1-Patj complex and the Cdc42-Par6-Par3-aPKC complex. Tight junctions assist in the formation of polarity in the epithelia by establishing a barrier to separate apical and basolateral membranes. Pals1, importantly, mediates interaction between the two complexes via interaction with Par6. Loss of Pals1 function results in delayed polarization, decreased transepithelial electrical resistance and an inability to form luminal cysts. Because tumors exhibit perturbations in epithelial polarity, Pals1 presents a new potential target in the study of carcinogenesis.		

— VALIDATION IMAGES —

Paraformaldehyde-fixed, paraffin embedded (Human kidney); Antigen retrieval by boiling in sodium citrate buffer (pH6.0) for 15min; Block endogenous peroxidase by 3% hydrogen peroxide for 20 minutes; Blocking buffer (normal goat serum) at 37°C for 30min; Antibody incubation with (MPP5) Polyclonal Antibody, Unconjugated (bs-11887R) at 1:200 overnight at 4°C, followed by operating according to SP Kit(Rabbit) (sp-0023) instructions and DAB staining.