

bs-11886R**[Primary Antibody]****METRN Rabbit pAb****Bioss**
ANTIBODIES

www.bioss.com.cn

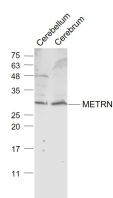
sales@bioss.com.cn

techsupport@bioss.com.cn

400-901-9800

— DATASHEET —

Host: Rabbit	Isotype: IgG	Applications: WB (1:500-2000)
Clonality: Polyclonal		Reactivity: Mouse (predicted: Human, Rat, Cow)
GeneID: 79006	SWISS: Q9UJH8	
Target: METRN		Predicted MW.: 29 kDa
Immunogen: KLH conjugated synthetic peptide derived from human METRN: 101-200/293.		Subcellular Location: Secreted
Purification: affinity purified by Protein A		
Concentration: 1mg/ml		
Storage: 0.01M TBS (pH7.4) with 1% BSA, 0.02% Proclin300 and 50% Glycerol. Shipped at 4°C. Store at -20°C for one year. Avoid repeated freeze/thaw cycles.		
Background: Meteorin is a secreted protein belonging to the Meteorin family that contains 293 amino acids and promotes axonal extension, axonal network formation and regulates glial cell differentiation. Expressed in radial glia and undifferentiated neural progenitors of the central and peripheral nervous system, Meteorin is encoded by a gene located on human chromosome 16, which encodes over 900 genes and comprises nearly 3% of the human genome. The GAN (Gigaxonin) gene is located on chromosome 16 and, with mutation, may lead to giant axonal neuropathy, a nervous system disorder characterized by increasing malfunction with growth. The rare disorder Rubinstein-Taybi syndrome is also associated with chromosome 16, as is Crohn's disease, which is a gastrointestinal inflammatory condition.		

— VALIDATION IMAGES —

Sample: Cerebellum (Mouse) Lysate at 40 ug
Cerebrum (Mouse) Lysate at 40 ug Primary: Anti-METRN (bs-11886R) at 1/1000 dilution
Secondary: IRDye800CW Goat Anti-Rabbit IgG at 1/20000 dilution Predicted band size: 29 kD
Observed band size: 29 kD