

bs-6208R**[Primary Antibody]****BioSS**
ANTIBODIES

www.bioss.com.cn

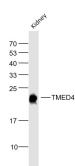
sales@bioss.com.cn

techsupport@bioss.com.cn

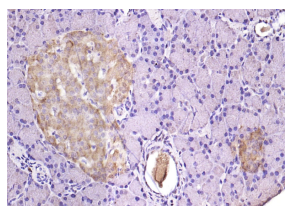
400-901-9800

TMED4 Rabbit pAb**— DATASHEET —**

Host: Rabbit	Isotype: IgG	Applications: WB (1:500-2000)
Clonality: Polyclonal		IHC-P (1:100-500)
GeneID: 222068	SWISS: Q7Z7H5	IHC-F (1:100-500)
Target: TMED4		IF (1:100-500)
Immunogen: KLH conjugated synthetic peptide derived from human TMED4: 41-140/227.		Reactivity: Mouse, Rat (predicted: Human, Rabbit, Pig, Sheep, Cow, Horse)
Purification: affinity purified by Protein A		
Concentration: 1mg/ml		Predicted MW.: 23 kDa
Storage: 0.01M TBS (pH7.4) with 1% BSA, 0.02% Proclin300 and 50% Glycerol. Shipped at 4°C. Store at -20°C for one year. Avoid repeated freeze/thaw cycles.		Subcellular Location: Cell membrane ,Cytoplasm
Background: TMED4 is a putative NF-κB activating protein belonging to the EMP24/GP25L family, and contains 1 GOLD domain. It is also known as Transmembrane emp24 protein transport domain containing 4.		

— VALIDATION IMAGES —

Sample: Kidney (Mouse) Lysate at 40 ug Primary:
Anti-TMED4 (bs-6208R) at 1/1000 dilution
Secondary: IRDye800CW Goat Anti-Rabbit IgG at
1/20000 dilution Predicted band size: 23 kD
Observed band size: 23 kD



Paraformaldehyde-fixed, paraffin embedded (rat pancreas); Antigen retrieval by boiling in sodium citrate buffer (pH6.0) for 15min; Block endogenous peroxidase by 3% hydrogen peroxide for 20 minutes; Blocking buffer (normal goat serum) at 37°C for 30min; Antibody incubation with (TMED4) Polyclonal Antibody, Unconjugated (bs-6208R) at 1:200 overnight at 4°C, followed by operating according to SP Kit(Rabbit) (sp-0023) instructions and DAB staining.