

bs-13553R

[Primary Antibody]

ZBED3 Rabbit pAb

Bioss
ANTIBODIES

www.bioss.com.cn

sales@bioss.com.cn

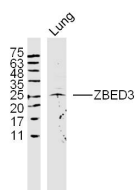
techsupport@bioss.com.cn

400-901-9800

— DATASHEET —

Host: Rabbit	Isotype: IgG	Applications: WB (1:500-2000)
Clonality: Polyclonal		Reactivity: Rat (predicted: Human, Mouse, Rabbit, Pig, Sheep, Cow, Dog, Horse)
GeneID: 84327	SWISS: Q96IU2	Predicted MW.: 25 kDa
Target: ZBED3		Subcellular Location: Cell membrane ,Cytoplasm
Immunogen: KLH conjugated synthetic peptide derived from human ZBED3: 51-150/234.		
Purification: affinity purified by Protein A		
Concentration: 1mg/ml		
Storage: 0.01M TBS (pH7.4) with 1% BSA, 0.02% Proclin300 and 50% Glycerol. Shipped at 4°C. Store at -20°C for one year. Avoid repeated freeze/thaw cycles.		

— VALIDATION IMAGES —



Sample: Lung (Rat) Lysate at 40 ug Primary: Anti-ZBED3 (bs-13553R) at 1/300 dilution Secondary: IRDye800CW Goat Anti-Rabbit IgG at 1/20000 dilution Predicted band size: 25 kD Observed band size: 25 kD

— SELECTED CITATIONS —

- **[IF=8]** Gu Xinyu. et al. RNA 5-methylcytosine writer NSUN5 promotes hepatocellular carcinoma cell proliferation via a ZBED3-dependent mechanism. ONCOGENE. 2024 Jan;;1-12 WB ;Human. 38182896