

bs-9667R**[Primary Antibody]****DENND2C Rabbit pAb****Bioss**
ANTIBODIES

www.bioss.com.cn

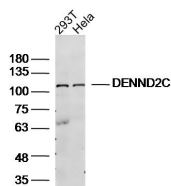
sales@bioss.com.cn

techsupport@bioss.com.cn

400-901-9800

— DATASHEET —

Host: Rabbit	Isotype: IgG	Applications: WB (1:500-2000)
Clonality: Polyclonal		Reactivity: Human (predicted: Mouse, Rabbit, Sheep, Cow, Horse)
GeneID: 163259	SWISS: Q68D51	
Target: DENND2C		Predicted MW.: 107 kDa
Immunogen: KLH conjugated synthetic peptide derived from human DENND2C: 231-330/928.		Subcellular Location: Cytoplasm ,Nucleus
Purification: affinity purified by Protein A		
Concentration: 1mg/ml		
Storage: 0.01M TBS (pH7.4) with 1% BSA, 0.02% Proclin300 and 50% Glycerol. Shipped at 4°C. Store at -20°C for one year. Avoid repeated freeze/thaw cycles.		
Background: DENND2C is a 928 amino acid protein that contains a dDENN domain, a DENN domain, and a uDENN domain and exists as three isoforms as a result of alternative splicing. The DENND2C protein is thought to target to actin filaments and control Rab9-dependent trafficking of mannose-6-phosphate receptor to lysosomes. The gene encoding DENND2C maps to human chromosome 1, the largest human chromosome which spans about 260 million base pairs and makes up 8% of the human genome. Other notable genes located on chromosome 1 include LMNA, which is associated with the rare aging disease Hutchinson-Gilford progeria, and the MUTYH gene, which is partially responsible for familial adenomatous polyposis. Stickler syndrome, Parkinsons, Gaucher disease and Usher syndrome.		

— VALIDATION IMAGES —

Sample: 293T Cell (Human) Lysate at 30 ug Hela
Cell (Human) Lysate at 30 ug Primary: Anti-DENND2C (bs-9667R) at 1/300 dilution
Secondary: IRDye800CW Goat Anti-Rabbit IgG at 1/20000 dilution Predicted band size: 107kD
Observed band size: 107kD