

bsm-30012M**[Primary Antibody]****human CD10 Mouse mAb****BioSS**
ANTIBODIES

www.bioss.com.cn

sales@bioss.com.cn

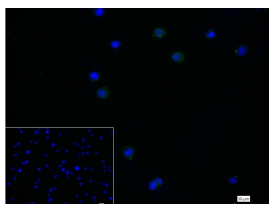
techsupport@bioss.com.cn

400-901-9800

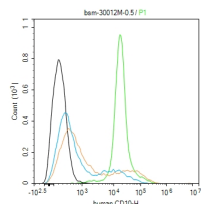
— DATASHEET —**Host:** Mouse**Clonality:** Monoclonal**GeneID:** 4311**Target:** human CD10**Purification:** affinity purified by Protein G**Concentration:** 1mg/ml**Storage:** 0.01M TBS (pH7.4).

Shipped at 4°C. Store at -20°C for one year. Avoid repeated freeze/thaw cycles.

Background: The protein encoded by this gene is a type II transmembrane glycoprotein and a common acute lymphocytic leukemia antigen that is an important cell surface marker in the diagnosis of human acute lymphocytic leukemia (ALL). The encoded protein is present on leukemic cells of pre-B phenotype, which represent 85% of cases of ALL. This protein is not restricted to leukemic cells, however, and is found on a variety of normal tissues. The protein is a neutral endopeptidase that cleaves peptides at the amino side of hydrophobic residues and inactivates several peptide hormones including glucagon, enkephalins, substance P, neurotensin, oxytocin, and bradykinin. [provided by RefSeq, Aug 2017]

Isotype: Mouse IgG2b, k**CloneNo.:** 10F8**SWISS:** P08473**Applications:** **Flow-Cyt** (1ug/Test)
ICC/IF (1:50-200)**Reactivity:** Human**Predicted**
MW.: 82 kDa**Subcellular**
Location: Cell membrane**— VALIDATION IMAGES —**

4% Paraformaldehyde-fixed Raji (H) cell; Triton X-100 at r.t. for 20 min; Antibody incubation with (CD10) monoclonal Antibody, unconjugated (bsm-30012M) 1:100, 90 min at 37°C; followed by conjugated Goat Anti-Mouse IgG antibody (green, bs-60296G-FITC) at 37°C for 90 min, DAPI (blue, C02-04002) was used to stain the cell nuclei. PBS instead of the primary antibody was used as the blank control.



The Ramos (H) cells were incubated in 5%BSA to block non-specific protein-protein interactions (30 min at r.t.). Primary Antibody (green): Mouse Anti-human CD10 antibody (bsm-30012M): 1 µg/10⁶ cells; Secondary Antibody (white blue): Goat anti-Mouse IgG-FITC (bs-60296G-FITC): 1 µg/test. Isotype Control (orange): Mouse IgG (bs-0296P). Blank control (black): PBS. Acquisition of 20,000 events was performed.