

bs-7730R**[Primary Antibody]****SMC6 Rabbit pAb****BioSS**
ANTIBODIES

www.bioss.com.cn

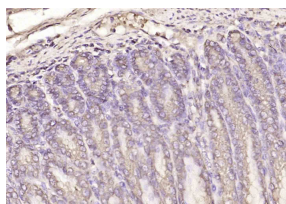
sales@bioss.com.cn

techsupport@bioss.com.cn

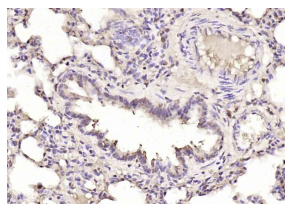
400-901-9800

— DATASHEET —

Host: Rabbit	Isotype: IgG	Applications: IHC-P (1:100-500) IHC-F (1:100-500) IF (1:100-500)
Clonality: Polyclonal		
GeneID: 79677		
Target: SMC6		Reactivity: Rat (predicted: Human, Mouse, Rabbit, Pig, Sheep, Cow, Dog, Horse)
Immunogen: KLH conjugated synthetic peptide derived from human SMC6: 155-260/1091.		
Purification: affinity purified by Protein A		Predicted MW.: 126 kDa
Concentration: 1mg/ml		Subcellular Location: Cytoplasm ,Nucleus
Storage: 0.01M TBS (pH7.4) with 1% BSA, 0.02% Proclin300 and 50% Glycerol. Shipped at 4°C. Store at -20°C for one year. Avoid repeated freeze/thaw cycles.		
Background: SMC5/6 complex is recruited to nuclease induced double strand breaks (DSBs) and is required for the recruitment of cohesin to DSBs. The human SMC5/6 complex and the SUMO ligase activity of hMMS21 are required for the prevention of DNA damage induced apoptosis by facilitating DNA repair in human cells.		

— VALIDATION IMAGES —

Paraformaldehyde-fixed, paraffin embedded (rat stomach); Antigen retrieval by boiling in sodium citrate buffer (pH6.0) for 15min; Block endogenous peroxidase by 3% hydrogen peroxide for 20 minutes; Blocking buffer (normal goat serum) at 37°C for 30min; Antibody incubation with (SMC6) Polyclonal Antibody, Unconjugated (bs-7730R) at 1:200 overnight at 4°C, followed by operating according to SP Kit(Rabbit) (sp-0023) instructions and DAB staining.



Paraformaldehyde-fixed, paraffin embedded (rat lung); Antigen retrieval by boiling in sodium citrate buffer (pH6.0) for 15min; Block endogenous peroxidase by 3% hydrogen peroxide for 20 minutes; Blocking buffer (normal goat serum) at 37°C for 30min; Antibody incubation with (SMC6) Polyclonal Antibody, Unconjugated (bs-7730R) at 1:200 overnight at 4°C, followed by operating according to SP Kit(Rabbit) (sp-0023) instructions and DAB staining.