

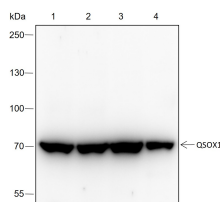
bsm-60426R**[Primary Antibody]****Bioss**
ANTIBODIES

www.bioss.com.cn

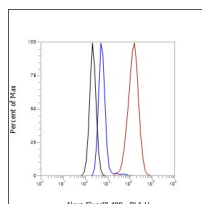
sales@bioss.com.cn

techsupport@bioss.com.cn

400-901-9800

QSOX1 Recombinant Rabbit mAb**— DATASHEET —****Host:** Rabbit**Clonality:** Recombinant**Target:** QSOX1**Purification:** affinity purified by Protein A**Concentration:** 1mg/ml**Storage:** 0.01M TBS (pH7.4) with 1% BSA, 0.02% Proclin300 and 50% Glycerol.
Shipped at 4°C. Store at -20°C for one year. Avoid repeated freeze/thaw cycles.**Background:** This gene encodes a protein that contains domains of thioredoxin and ERV1, members of two long-standing gene families. The gene expression is induced as fibroblasts begin to exit the proliferative cycle and enter quiescence, suggesting that this gene plays an important role in growth regulation. Two transcript variants encoding two different isoforms have been found for this gene. [provided by RefSeq, Jul 2008]**Isotype:** IgG**CloneNo.:** H12B2**Applications:** WB (1:500-1000)**Flow-Cyt** (1:50-100)**Reactivity:** Human**Predicted
MW.:** 80 kDa**Subcellular
Location:** Extracellular matrix**— VALIDATION IMAGES —**

Blocking buffer: 5% NFDM/TBST Primary ab
dilution: 1:1000 Primary ab incubation
condition: 2 hours at room temperature
Secondary ab: Goat Anti-Rabbit IgG H&L (HRP)
Lysate: 1: MCF-7, 2: MDA-MB-231, 3: T47D, 4: 293T
Protein loading quantity: 20 µg Exposure time:
30 s Predicted MW: 83 kDa Observed MW: 67 kDa



Cell line: MDA-MB-231 Fixative: 4%
Paraformaldehyde Permeabilization: 90%
Methanol Primary ab dilution: 1:100 Secondary
ab: Goat anti Rabbit IgG Unlabelled control: The
cell without incubation with primary antibody
and secondary antibody (Black line). Isotype
control: Rabbit monoclonal IgG (Blue line).
Comment: Line red is the positive signal for
bsm-60426R