

bs-3658R**[Primary Antibody]****NIPP1 Rabbit pAb****BioSS**
ANTIBODIES

www.bioss.com.cn

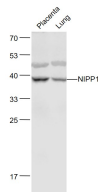
sales@bioss.com.cn

techsupport@bioss.com.cn

400-901-9800

— DATASHEET —

Host: Rabbit	Isotype: IgG	Applications: WB (1:500-2000)
Clonality: Polyclonal		Reactivity: Mouse (predicted: Human, Rat, Rabbit, Pig, Cow, Zebrafish, Chicken, GuineaPig, Horse)
GeneID: 5511	SWISS: Q12972	Predicted MW.: 38 kDa
Target: NIPP1		Subcellular Location: Cytoplasm ,Nucleus
Immunogen: KLH conjugated synthetic peptide derived from human NIPP1: 21-120/351.		
Purification: affinity purified by Protein A		
Concentration: 1mg/ml		
Storage: 0.01M TBS (pH7.4) with 1% BSA, 0.02% Proclin300 and 50% Glycerol. Shipped at 4°C. Store at -20°C for one year. Avoid repeated freeze/thaw cycles.		
Background: Inhibitor subunit of the major nuclear protein phosphatase 1 (PP1). It has RNA binding activity but does not cleave RNA and may target PP1 to RNA associated substrates. May also be involved in pre mRNA splicing. Binds DNA and might act as a transcriptional repressor. Seems to be required for cell proliferation.		

— VALIDATION IMAGES —

Sample: Placenta (Mouse) Lysate at 40 ug Lung
(Mouse) Lysate at 40 ug Primary: Anti- NIPP1
(bs-3658R) at 1/1000 dilution Secondary:
IRDye800CW Goat Anti-Rabbit IgG at 1/20000
dilution Predicted band size: 38 kD Observed
band size: 38 kD