

bs-4008R**[Primary Antibody]****ATG4C Rabbit pAb****BioSS**
ANTIBODIES

www.bioss.com.cn

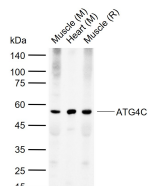
sales@bioss.com.cn

techsupport@bioss.com.cn

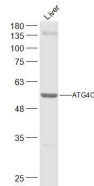
400-901-9800

— DATASHEET —

Host: Rabbit Clonality: Polyclonal GeneID: 84938 Target: ATG4C Immunogen: KLH conjugated synthetic peptide derived from human ATG4C: 201-300/458. Purification: affinity purified by Protein A Concentration: 1mg/ml Storage: 0.01M TBS (pH7.4) with 1% BSA, 0.02% Proclin300 and 50% Glycerol. Shipped at 4°C. Store at -20°C for one year. Avoid repeated freeze/thaw cycles. Background: Cysteine protease required for autophagy, which cleaves the C-terminal part of either MAP1LC3, GABARAPL2 or GABARAP, allowing the liberation of form I. A subpopulation of form I is subsequently converted to a smaller form (form II). Form II, with a revealed C-terminal glycine, is considered to be the phosphatidylethanolamine (PE)-conjugated form, and has the capacity for the binding to autophagosomes.	Isotype: IgG SWISS: Q96DT6	Applications: WB (1:500-2000) Reactivity: Human, Mouse, Rat (predicted: Rabbit, Pig, Cow, Dog, Horse) Predicted MW.: 52 kDa Subcellular Location: Cytoplasm ,Nucleus
--	---	--

— VALIDATION IMAGES —

Sample: Lane 1: Mouse Muscle tissue lysates
Lane 2: Mouse Heart tissue lysates Lane 3: Rat Muscle tissue lysates
Primary: Anti-ATG4C (bs-4008R) at 1/1000 dilution
Secondary: IRDye800CW Goat Anti-Rabbit IgG at 1/20000 dilution
Predicted band size: 52 kDa
Observed band size: 52 kDa



Sample: Liver (Mouse) Lysate at 40 ug
Primary: Anti-ATG4C (bs-4008R) at 1/1000 dilution
Secondary: IRDye800CW Goat Anti-Rabbit IgG at 1/20000 dilution
Predicted band size: 52 kD
Observed band size: 55 kD