

bs-3649R**[Primary Antibody]****KLF8 Rabbit pAb****Bioss**
ANTIBODIES

www.bioss.com.cn

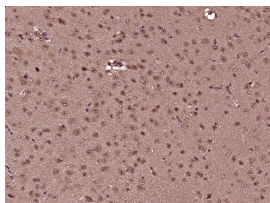
sales@bioss.com.cn

techsupport@bioss.com.cn

400-901-9800

— DATASHEET —

Host: Rabbit	Isotype: IgG	Applications: IHC-P (1:100-500) IHC-F (1:100-500) IF (1:100-500) Reactivity: Mouse (predicted: Human, Rat, Rabbit, Pig, Cow, Chicken, Dog, Horse) Predicted MW.: 38 kDa Subcellular Location: Nucleus
Clonality: Polyclonal		
GeneID: 11279	SWISS: O95600	
Target: KLF8		
Immunogen: KLH conjugated synthetic peptide derived from human KLF8: 261-317 /359.		
Purification: affinity purified by Protein A		
Concentration: 1mg/ml		
Storage: 0.01M TBS (pH7.4) with 1% BSA, 0.02% Proclin300 and 50% Glycerol. Shipped at 4°C. Store at -20°C for one year. Avoid repeated freeze/thaw cycles.		
Background: KLF8 is a transcriptional repressor and activator. It also binds the GT-box of cyclin D1 promoter and mediates cell cycle progression at G phase as a downstream target of focal adhesion kinase (FAK). Ubiquitously expressed. Kruppel-like factor proteins all contain a characteristic C-terminal DNA binding domain containing 3 Kruppel-like zinc fingers, and they all recognize CACCC and GC boxes present in promoters and enhancers.		

— VALIDATION IMAGES —

Paraformaldehyde-fixed, paraffin embedded (Mouse brain); Antigen retrieval by boiling in sodium citrate buffer (pH6.0) for 15min; Block endogenous peroxidase by 3% hydrogen peroxide for 20 minutes; Blocking buffer (normal goat serum) at 37°C for 30min; Antibody incubation with (KLF8) Polyclonal Antibody, Unconjugated (bs-3649R) at 1:400 overnight at 4°C, followed by operating according to SP Kit(Rabbit) (sp-0023) instructions and DAB staining.