

bs-11071R**[Primary Antibody]****ANTXR2 Rabbit pAb****BioSS**
ANTIBODIES

www.bioss.com.cn

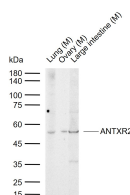
sales@bioss.com.cn

techsupport@bioss.com.cn

400-901-9800

— DATASHEET —

Host: Rabbit	Isotype: IgG	Applications: WB (1:500-2000)
Clonality: Polyclonal		Reactivity: Mouse (predicted: Human, Rat, Rabbit, Pig, Cow, Dog, Horse)
GeneID: 118429	SWISS: P58335	Predicted MW.: 50 kDa
Target: ANTXR2		Subcellular Location: Secreted ,Extracellular matrix ,Cell membrane ,Cytoplasm
Immunogen: KLH conjugated synthetic peptide derived from human ANTXR2: 101-200/489.		
Purification: affinity purified by Protein A		
Concentration: 1mg/ml		
Storage: 0.01M TBS (pH7.4) with 1% BSA, 0.02% Proclin300 and 50% Glycerol. Shipped at 4°C. Store at -20°C for one year. Avoid repeated freeze/thaw cycles.		
Background: This gene encodes a receptor for anthrax toxin. The protein binds to collagen IV and laminin, suggesting that it may be involved in extracellular matrix adhesion. Mutations in this gene cause juvenile hyaline fibromatosis and infantile systemic hyalinosis. Multiple transcript variants encoding different isoforms have been found for this gene. [provided by RefSeq, Mar 2009].		

— VALIDATION IMAGES —

Sample: Lane 1: Mouse Lung tissue lysates Lane 2: Mouse Ovary tissue lysates Lane 3: Mouse Large intestine tissue lysates Primary: Anti-ANTXR2 (bs-11071R) at 1/1000 dilution Secondary: IRDye800CW Goat Anti-Rabbit IgG at 1/20000 dilution Predicted band size: 50 kDa Observed band size: 52 kDa