

**bs-9177R****[ Primary Antibody ]****RNF12 Rabbit pAb****BioSS**  
**ANTIBODIES**

www.bioss.com.cn

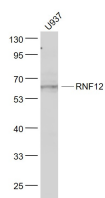
sales@bioss.com.cn

techsupport@bioss.com.cn

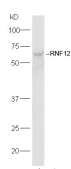
400-901-9800

**— DATASHEET —**

|   |                      |   |
|---|----------------------|---|
| <b>Host:</b> Rabbit   | <b>Isotype:</b> IgG  | <b>Applications:</b> WB (1:500-2000)  |
| <b>Clonality:</b> Polyclonal  |                      | <b>Reactivity:</b> Human, Mouse<br>(predicted: Rat, Rabbit, Pig,<br>Sheep, Cow, Dog, Horse) |
| <b>GeneID:</b> 51132  | <b>SWISS:</b> Q9NVW2 | <b>Predicted MW.:</b> 69 kDa  |
| <b>Target:</b> RNF12  |                      | <b>Subcellular Location:</b> Cytoplasm ,Nucleus   |
| <b>Immunogen:</b> KLH conjugated synthetic peptide derived from human RNF12: 525-624/624.   |                      |   |
| <b>Purification:</b> affinity purified by Protein A   |                      |   |
| <b>Concentration:</b> 1mg/ml  |                      |   |
| <b>Storage:</b> 0.01M TBS (pH7.4) with 1% BSA, 0.02% Proclin300 and 50% Glycerol.<br>Shipped at 4°C. Store at -20°C for one year. Avoid repeated freeze/thaw cycles.  |                      |   |
| <b>Background:</b> RLIM, also known as RNF12 (RING finger protein 12) or NY-REN-43, is a 624 amino acid RING-H2 zinc finger protein that is involved in protein ubiquitinylation and subsequent degradation. Expressed in a variety of tissues, RLIM binds to the LIM domain of various proteins and functions as a protein ligase that negatively co-regulates LIM homeodomain (LIM-HD) transcription factors. Through its interaction with Sin3A, a component of the histone deacetylase corepressor complex, RLIM is able to recruit the corepressor complex to LIM-HD proteins, thereby inhibiting LIM-HD transcription. In addition to recruiting the deacetylase complex to LIM-HD proteins, RLIM is able to bind to, ubiquitinate and subsequently degrade CLIM proteins, which function as positive co-regulators of LIM-HD transcription factors. RLIM contains one RING-type zinc finger and is implicated in renal cell carcinoma. |                      |   |

**— VALIDATION IMAGES —**

Sample: U937(Human) Cell Lysate at 30 ug  
Primary: Anti- RNF12 (bs-9177R) at 1/1000  
dilution Secondary: IRDye800CW Goat Anti-  
Rabbit IgG at 1/20000 dilution Predicted band  
size: 69 kD Observed band size: 67 kD



Sample: placenta (Mouse) Lysate at 40 ug  
Primary: Anti-RNF12 (bs-9177R) at 1/300 dilution  
Secondary: IRDye800CW Goat Anti-Rabbit IgG at  
1/20000 dilution Predicted band size: 69 kD  
Observed band size: 69 kD