

**bs-1855R****[ Primary Antibody ]****BioSS**  
**ANTIBODIES**

www.bioss.com.cn

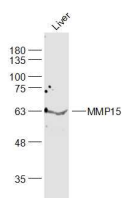
sales@bioss.com.cn

techsupport@bioss.com.cn

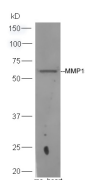
400-901-9800

**MMP15 Rabbit pAb****— DATASHEET —**

<b>Host:</b> Rabbit <b>Clonality:</b> Polyclonal <b>GeneID:</b> 4324 <b>Target:</b> MMP15 <b>Immunogen:</b> KLH conjugated synthetic peptide derived from human MMP15: 501-600/669. <b>Purification:</b> affinity purified by Protein A <b>Concentration:</b> 1mg/ml <b>Storage:</b> 0.01M TBS (pH7.4) with 1% BSA, 0.02% Proclin300 and 50% Glycerol. Shipped at 4°C. Store at -20°C for one year. Avoid repeated freeze/thaw cycles. <b>Background:</b> Proteins of the matrix metalloproteinase (MMP) family are involved in the breakdown of extracellular matrix in normal physiological processes, such as embryonic development, reproduction, and tissue remodeling, as well as in disease processes, such as arthritis and metastasis. Most MMP's are secreted as inactive proproteins which are activated when cleaved by extracellular proteinases. However, the protein encoded by this gene is a member of the membrane-type MMP (MT-MMP) subfamily; each member of this subfamily contains a potential transmembrane domain suggesting that these proteins are expressed at the cell surface rather than secreted. [provided by RefSeq, Jul 2008].	<b>Isotype:</b> IgG <b>SWISS:</b> P51511	<b>Applications:</b> WB (1:500-2000) <b>Reactivity:</b> Mouse (predicted: Human, Rat, Pig, Cow, Dog, Horse) <b>Predicted MW.:</b> 61/76 kDa <b>Subcellular Location:</b> Extracellular matrix ,Cell membrane
---	---	---

**— VALIDATION IMAGES —**

Sample: Liver (Mouse) Lysate at 40 ug Primary:  
 Anti-MMP15 (bs-1855R) at 1/1000 dilution  
 Secondary: IRDye800CW Goat Anti-Rabbit IgG at  
 1/20000 dilution Predicted band size: 61 kD  
 Observed band size: 61 kD



Sample: Heart(Mouse) lysate at 30ug; Primary:  
 Anti- MMP15 (bs-1855R) at 1:300 dilution;  
 Secondary: HRP conjugated Goat-Anti-rabbit  
 IgG(bs-0295G-HRP) at 1: 5000 dilution; Predicted  
 band size:61 kD Observed band size:61 kD