

bs-16605R**[Primary Antibody]****ILKAP Rabbit pAb****Bioss**
ANTIBODIES

www.bioss.com.cn

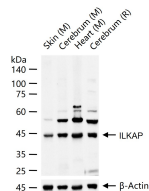
sales@bioss.com.cn

techsupport@bioss.com.cn

400-901-9800

— DATASHEET —

Host: Rabbit	Isotype: IgG	Applications: WB (1:500-2000)
Clonality: Polyclonal		Reactivity: Mouse, Rat (predicted: Human, Pig, Cow)
GeneID: 80895	SWISS: Q9H0C8	Predicted MW.: 43 kDa
Target: ILKAP		Subcellular Location: Cytoplasm
Immunogen: KLH conjugated synthetic peptide derived from human ILKAP: 201-300/392.		
Purification: affinity purified by Protein A		
Concentration: 1mg/ml		
Storage: 0.01M TBS (pH7.4) with 1% BSA, 0.02% Proclin300 and 50% Glycerol. Shipped at 4°C. Store at -20°C for one year. Avoid repeated freeze/thaw cycles.		
Background: ILKAP belongs to the PP2C family and contains one PP2C-like domain. ILKAP has been suggested to inhibit oncogenic transformation and the ILK-GSK3beta signaling axis, and can bind two magnesium or manganese ions per subunit as cofactors. The gene encoding ILKAP maps to human chromosome 2, which consists of 237 million bases encoding over 1,400 genes and making up approximately 8% of the human genome.		

— VALIDATION IMAGES —

25 ug total protein per lane of various lysates (see on figure) probed with ILKAP polyclonal antibody, unconjugated (bs-16605R) at 1:1000 dilution and 4°C overnight incubation. Followed by conjugated secondary antibody incubation at r.t. for 60 min.