

**bs-16590R****[ Primary Antibody ]****Bioss**  
**ANTIBODIES**

www.bioss.com.cn

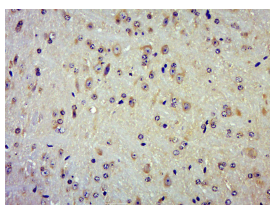
sales@bioss.com.cn

techsupport@bioss.com.cn

400-901-9800

**TRAPPCL2 Rabbit pAb****— DATASHEET —**

<b>Host:</b> Rabbit	<b>Isotype:</b> IgG	<b>Applications:</b> <b>IHC-P</b> (1:100-500) <b>IHC-F</b> (1:100-500) <b>IF</b> (1:100-500)
<b>Clonality:</b> Polyclonal		
<b>GeneID:</b> 51693	<b>SWISS:</b> Q9UL33	
<b>Target:</b> TRAPPCL2		<b>Reactivity:</b> Mouse (predicted: Human, Rat, Pig, Cow, Dog, Horse)
<b>Immunogen:</b> KLH conjugated synthetic peptide derived from human TRAPPCL2: 21-80/140.		
<b>Purification:</b> affinity purified by Protein A		<b>Predicted MW.:</b> 16 kDa
<b>Concentration:</b> 1mg/ml		<b>Subcellular Location:</b> Cytoplasm
<b>Storage:</b> 0.01M TBS (pH7.4) with 1% BSA, 0.02% Proclin300 and 50% Glycerol. Shipped at 4°C. Store at -20°C for one year. Avoid repeated freeze/thaw cycles.		
<b>Background:</b> TRAPPCL2 may play a role in vesicular transport from endoplasmic reticulum to Golgi.		

**— VALIDATION IMAGES —**

Paraformaldehyde-fixed, paraffin embedded (Mouse brain); Antigen retrieval by boiling in sodium citrate buffer (pH6.0) for 15min; Block endogenous peroxidase by 3% hydrogen peroxide for 20 minutes; Blocking buffer (normal goat serum) at 37°C for 30min; Antibody incubation with (TRAPPCL2) Polyclonal Antibody, Unconjugated (bs-16590R) at 1:500 overnight at 4°C, followed by a conjugated secondary (sp-0023) for 20 minutes and DAB staining.