

bs-16588R

[Primary Antibody]

TRAPPC6B Rabbit pAb

Bioss
ANTIBODIES

www.bioss.com.cn

sales@bioss.com.cn

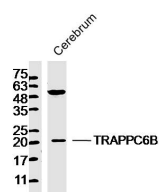
techsupport@bioss.com.cn

400-901-9800

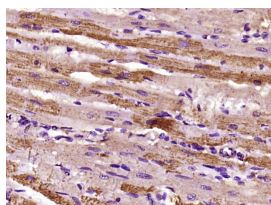
— DATASHEET —

Host: Rabbit	Isotype: IgG	Applications: WB (1:500-2000) IHC-P (1:100-500) IHC-F (1:100-500) IF (1:100-500) Reactivity: Mouse, Rat (predicted: Human, Cow) Predicted MW.: 18 kDa Subcellular Location: Cytoplasm
Clonality: Polyclonal		
GeneID: 122553	SWISS: Q86SZ2	
Target: TRAPPC6B		
Immunogen: KLH conjugated synthetic peptide derived from human TRAPPC6B: 51-120/159.		
Purification: affinity purified by Protein A		
Concentration: 1mg/ml		
Storage: 0.01M TBS (pH7.4) with 1% BSA, 0.02% Proclin300 and 50% Glycerol. Shipped at 4°C. Store at -20°C for one year. Avoid repeated freeze/thaw cycles.		
Background: TRAPPC6B is a component of TRAPP complexes, which are tethering complexes involved in vesicle transport (Kummel et al., 2005 [PubMed 16025134]).[supplied by OMIM, Mar 2008]		

— VALIDATION IMAGES —



Sample: Cerebrum (Mouse) Lysate at 40 ug
Primary: Anti-TRAPPC6B (bs-16588R) at 1/300
dilution Secondary: IRDye800CW Goat Anti-
Rabbit IgG at 1/20000 dilution Predicted band
size: 18 kD Observed band size: 20 kD



Paraformaldehyde-fixed, paraffin embedded
(Rat heart); Antigen retrieval by boiling in
sodium citrate buffer (pH6.0) for 15min; Block
endogenous peroxidase by 3% hydrogen
peroxide for 20 minutes; Blocking buffer (normal
goat serum) at 37°C for 30min; Antibody
incubation with (TRAPPC6B) Polyclonal
Antibody, Unconjugated (bs-16588R) at 1:400
overnight at 4°C, followed by operating
according to SP Kit(Rabbit) (sp-0023)
instructions and DAB staining.