

bs-12151R

[Primary Antibody]

NAV3 Rabbit pAb

BioSS
ANTIBODIES

www.bioss.com.cn

sales@bioss.com.cn

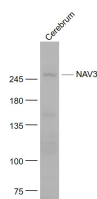
techsupport@bioss.com.cn

400-901-9800

— DATASHEET —

Host: Rabbit	Isotype: IgG	Applications: WB (1:500-2000)
Clonality: Polyclonal		
GeneID: 89795	SWISS: Q8IVL0	
Target: NAV3		
Immunogen: KLH conjugated synthetic peptide derived from human NAV3: 301-400/2385.		
Purification: affinity purified by Protein A		Reactivity: Mouse (predicted: Human, Rat, Sheep, Chicken, Horse)
Concentration: 1mg/ml		
Storage: 0.01M TBS (pH7.4) with 1% BSA, 0.02% Proclin300 and 50% Glycerol. Shipped at 4°C. Store at -20°C for one year. Avoid repeated freeze/thaw cycles.		Predicted MW.: 255 kDa
Background: May regulate IL2 production by T-cells. May be involved in neuron regeneration.		Subcellular Location: Cell membrane ,Nucleus

— VALIDATION IMAGES —



Sample: Cerebrum (Mouse) Lysate at 40 ug
Primary: Anti- NAV3 (bs-12151R) at 1/1000
dilution Secondary: IRDye800CW Goat Anti-
Rabbit IgG at 1/20000 dilution Predicted band
size: 255 kD Observed band size: 255 kD

— SELECTED CITATIONS —

- **[IF=24.633]** Yanxin Li. et al. Decoding the temporal and regional specification of microglia in the developing human brain. Cell Stem Cell. 2022 Mar;; IF ;Mouse,Human. 35245443