

**bs-17478R****[ Primary Antibody ]****Melanoma gp100 Rabbit pAb****BioSS**  
**ANTIBODIES**

www.bioss.com.cn

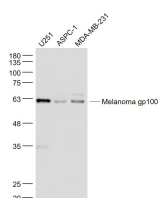
sales@bioss.com.cn

techsupport@bioss.com.cn

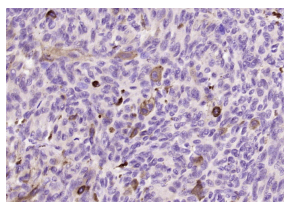
400-901-9800

**— DATASHEET —**

<b>Host:</b> Rabbit	<b>Isotype:</b> IgG	<b>Applications:</b> WB (1:500-2000)
<b>Clonality:</b> Polyclonal		<b>IHC-P</b> (1:100-500)
<b>GeneID:</b> 6490	<b>SWISS:</b> P40967	<b>IHC-F</b> (1:100-500)
<b>Target:</b> Melanoma gp100		<b>IF</b> (1:100-500)
<b>Immunogen:</b> KLH conjugated synthetic peptide derived from human Melanoma gp100: 21-120/661.		<b>Reactivity:</b> Human (predicted: Horse)
<b>Purification:</b> affinity purified by Protein A		
<b>Concentration:</b> 1mg/ml		<b>Predicted MW.:</b> 68 kDa
<b>Storage:</b> 0.01M TBS (pH7.4) with 1% BSA, 0.02% Proclin300 and 50% Glycerol. Shipped at 4°C. Store at -20°C for one year. Avoid repeated freeze/thaw cycles.		<b>Subcellular Location:</b> Secreted ,Extracellular matrix
<b>Background:</b> This gene encodes a melanocyte-specific type I transmembrane glycoprotein. The encoded protein is enriched in melanosomes, which are the melanin-producing organelles in melanocytes, and plays an essential role in the structural organization of premelanosomes. This protein is involved in generating internal matrix fibers that define the transition from Stage I to Stage II melanosomes. This protein undergoes a complex pattern of posttranslational processing and modification that is essential to the proper functioning of the protein. A secreted form of this protein that is released by proteolytic ectodomain shedding may be used as a melanoma-specific serum marker. Alternate splicing results in multiple transcript variants. [provided by RefSeq, Jan 2011]		

**— VALIDATION IMAGES —**

Sample: U251(Human) Cell Lysate at 30 ug  
 ASPC-1(Human) Cell Lysate at 30 ug  
 MDA-MB-231(Human) Cell Lysate at 30 ug  
 Primary: Anti- Melanoma gp100 (bs-17478R) at 1/1000 dilution  
 Secondary: IRDye800CW Goat Anti-Rabbit IgG at 1/20000 dilution  
 Predicted band size: 68 kD  
 Observed band size: 62 kD



Paraformaldehyde-fixed, paraffin embedded (Human melanoma);  
 Antigen retrieval by boiling in sodium citrate buffer (pH6.0) for 15min;  
 Block endogenous peroxidase by 3% hydrogen peroxide for 20 minutes;  
 Blocking buffer (normal goat serum) at 37°C for 30min;  
 Antibody incubation with (Melanoma gp100) Polyclonal Antibody, Unconjugated (bs-17478R) at 1:200 overnight at 4°C, followed by operating according to SP Kit(Rabbit) (sp-0023) instructions and DAB staining.

**— SELECTED CITATIONS —**

- **[IF=8.786]** Zhang Yushan. et al. Establishment and validation of evaluation models for post-inflammatory pigmentation abnormalities. FRONT IMMUNOL. 2022 Oct;0:6492 WB ;Human. 36389813