

**bs-1218R**

**[ Primary Antibody ]**

## XRCC1 Rabbit pAb

**BioSS**  
ANTIBODIES

www.bioss.com.cn

sales@bioss.com.cn

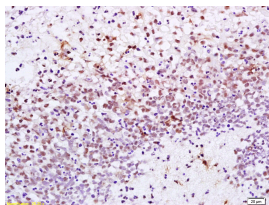
techsupport@bioss.com.cn

400-901-9800

### — DATASHEET —

<b>Host:</b> Rabbit	<b>Isotype:</b> IgG	<b>Applications:</b> IHC-P (1:100-500) IHC-F (1:100-500) IF (1:100-500)  <b>Reactivity:</b> Human (predicted: Mouse, Rat)  <b>Predicted MW.:</b> 69 kDa  <b>Subcellular Location:</b> Nucleus
<b>Clonality:</b> Polyclonal		
<b>GeneID:</b> 7515	<b>SWISS:</b> P18887	
<b>Target:</b> XRCC1		
<b>Immunogen:</b> KLH conjugated synthetic peptide derived from human XRCC1: 1-120/633.		
<b>Purification:</b> affinity purified by Protein A		
<b>Concentration:</b> 1mg/ml		
<b>Storage:</b> 0.01M TBS (pH7.4) with 1% BSA, 0.02% Proclin300 and 50% Glycerol. Shipped at 4°C. Store at -20°C for one year. Avoid repeated freeze/thaw cycles.		
<b>Background:</b> XRCC1 is involved in the efficient repair of DNA single-strand breaks formed by exposure to ionizing radiation and alkylating agents. This protein interacts with DNA ligase III, polymerase beta and poly (ADP-ribose) polymerase to participate in the base excision repair pathway. It may play a role in DNA processing during meiosis and recombination in germ cells. A rare microsatellite polymorphism in this gene is associated with cancer in patients of varying radiosensitivity. In testis XRCC1 is expressed at high levels.		

### — VALIDATION IMAGES —



Tissue/cell: human gastric carcinoma; 4% Paraformaldehyde-fixed and paraffin-embedded; Antigen retrieval: citrate buffer (0.01M, pH 6.0), Boiling bathing for 15min; Block endogenous peroxidase by 3% Hydrogen peroxide for 30min; Blocking buffer (normal goat serum, C-0005) at 37°C for 20 min; Incubation: Anti-XRCC1 Polyclonal Antibody, Unconjugated(bs-1218R) 1:200, overnight at 4°C, followed by conjugation to the secondary antibody(SP-0023) and DAB(C-0010) staining