

bs-17466R

[Primary Antibody]

SHISA7 Rabbit pAb

BioSS
ANTIBODIES

www.bioss.com.cn

sales@bioss.com.cn

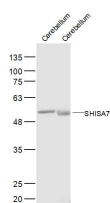
techsupport@bioss.com.cn

400-901-9800

— DATASHEET —

Host: Rabbit	Isotype: IgG	Applications: WB (1:500-2000)
Clonality: Polyclonal		Reactivity: Mouse (predicted: Human, Rat, Sheep, Cow, Dog, Horse)
GeneID: 729956	SWISS: A6NL88	
Target: SHISA7		Predicted MW.: 54 kDa
Immunogen: KLH conjugated synthetic peptide derived from human SHISA7: 261-360/538. < Cytoplasmic >		Subcellular Location: Cell membrane
Purification: affinity purified by Protein A		
Concentration: 1mg/ml		
Storage: 0.01M TBS (pH7.4) with 1% BSA, 0.02% Proclin300 and 50% Glycerol. Shipped at 4°C. Store at -20°C for one year. Avoid repeated freeze/thaw cycles.		

— VALIDATION IMAGES —



Sample: Brain (Mouse) Lysate at 40 ug
Cerebellum (Mouse) Lysate at 40 ug Cerebellum
(rat) Lysate at 40 ug Primary: Anti-SHISA7
(bs-17466R) at 1/500 dilution Secondary:
IRDye800CW Goat Anti-Rabbit IgG at 1/20000
dilution Predicted band size: 54 kD Observed
band size: 54 kD