

**bs-17465R**

**[ Primary Antibody ]**

## SHISA6 Rabbit pAb

**Bioss**  
ANTIBODIES

www.bioss.com.cn

sales@bioss.com.cn

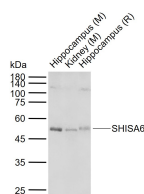
techsupport@bioss.com.cn

400-901-9800

### — DATASHEET —

<b>Host:</b> Rabbit	<b>Isotype:</b> IgG	<b>Applications:</b> WB (1:500-2000)
<b>Clonality:</b> Polyclonal		
<b>GeneID:</b> 388336	<b>SWISS:</b> Q6ZSJ9	
<b>Target:</b> SHISA6		
<b>Immunogen:</b> KLH conjugated synthetic peptide derived from human SHISA6: 251-350/500.		
<b>Purification:</b> affinity purified by Protein A		<b>Reactivity:</b> Mouse, Rat (predicted: Human, Rabbit, Chicken)
<b>Concentration:</b> 1mg/ml		
<b>Storage:</b> 0.01M TBS (pH7.4) with 1% BSA, 0.02% Proclin300 and 50% Glycerol. Shipped at 4°C. Store at -20°C for one year. Avoid repeated freeze/thaw cycles.		
		<b>Predicted MW.:</b> 53 kDa
		<b>Subcellular Location:</b> Cell membrane

### — VALIDATION IMAGES —



Sample: Lane 1: Mouse Hippocampus tissue lysates  
Lane 2: Mouse Kidney tissue lysates  
Lane 3: Rat Hippocampus tissue lysates  
Primary: Anti-SHISA6 (bs-17465R) at 1/1000 dilution  
Secondary: IRDye800CW Goat Anti-Rabbit IgG at 1/20000 dilution  
Predicted band size: 53 kDa  
Observed band size: 50 kDa