

**bs-5527R****[ Primary Antibody ]****phospho-NPTX1 (Tyr344) Rabbit pAb****BioSS**  
**ANTIBODIES**

www.bioss.com.cn

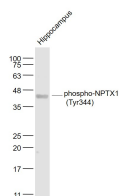
sales@bioss.com.cn

techsupport@bioss.com.cn

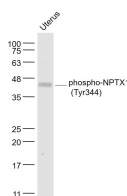
400-901-9800

**— DATASHEET —**

<b>Host:</b> Rabbit	<b>Isotype:</b> IgG	<b>Applications:</b> WB (1:500-2000)
<b>Clonality:</b> Polyclonal		<b>Reactivity:</b> Mouse (predicted: Human, Rat, Rabbit, Pig, Cow, Dog, Horse)
<b>GeneID:</b> 4884	<b>SWISS:</b> Q15818	
<b>Target:</b> phospho-NPTX1 (Tyr344)		<b>Predicted MW.:</b> 45 kDa
<b>Immunogen:</b> KLH conjugated Synthesised phosphopeptide derived from human NPTX1 around the phosphorylation site of Tyr344: AP(p-Y)HP.		<b>Subcellular Location:</b> Cytoplasm
<b>Purification:</b> affinity purified by Protein A		
<b>Concentration:</b> 1mg/ml		
<b>Storage:</b> 0.01M TBS (pH7.4) with 1% BSA, 0.02% Proclin300 and 50% Glycerol. Shipped at 4°C. Store at -20°C for one year. Avoid repeated freeze/thaw cycles.		
<b>Background:</b> NPTX1 is a member of the neuronal pentraxin gene family. Neuronal pentraxin 1 is similar to the rat NP1 gene which encodes a binding protein for the snake venom toxin taipoxin. Human NPTX1 mRNA is exclusively localized to the nervous system. [provided by RefSeq, Jul 2008]		

**— VALIDATION IMAGES —**

Sample: Hippocampus (Mouse) Lysate at 40 ug  
Primary: Anti- phospho-NPTX1 (Tyr344)  
(bs-5527R) at 1/1000 dilution Secondary:  
IRDye800CW Goat Anti-Rabbit IgG at 1/20000  
dilution Predicted band size: 45 kD Observed  
band size: 45 kD



Sample: Uterus (Mouse) Lysate at 40 ug Primary:  
Anti- phospho-NPTX1 (Tyr344) (bs-5527R) at  
1/1000 dilution Secondary: IRDye800CW Goat  
Anti-Rabbit IgG at 1/20000 dilution Predicted  
band size: 45 kD Observed band size: 45 kD